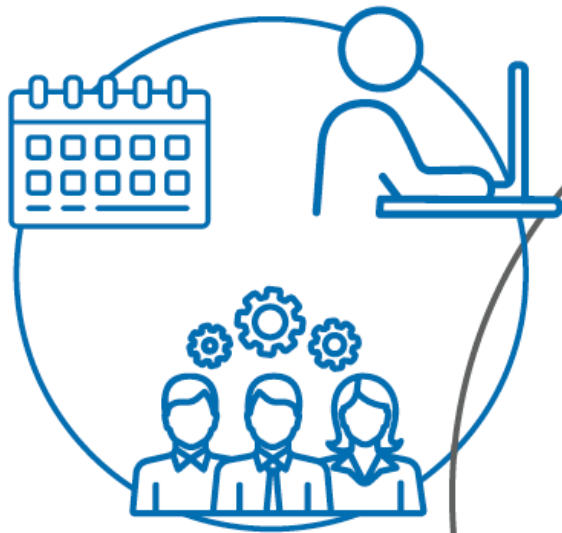


2021 Admissions Workshop



Leadership in Enrollment Management



American Association of
Colleges of Pharmacy **AACP**
Pharmacists Help People Live Healthier, Better Lives.

PROFESSIONAL COMPETENCY AREAS FOR STUDENT AFFAIRS EDUCATORS



JASON PINA,
EDD - NEW
YORK
UNIVERSITY

HEATHER MW
PETRELLI, PHD
- UNIVERSITY
OF SOUTH
FLORIDA



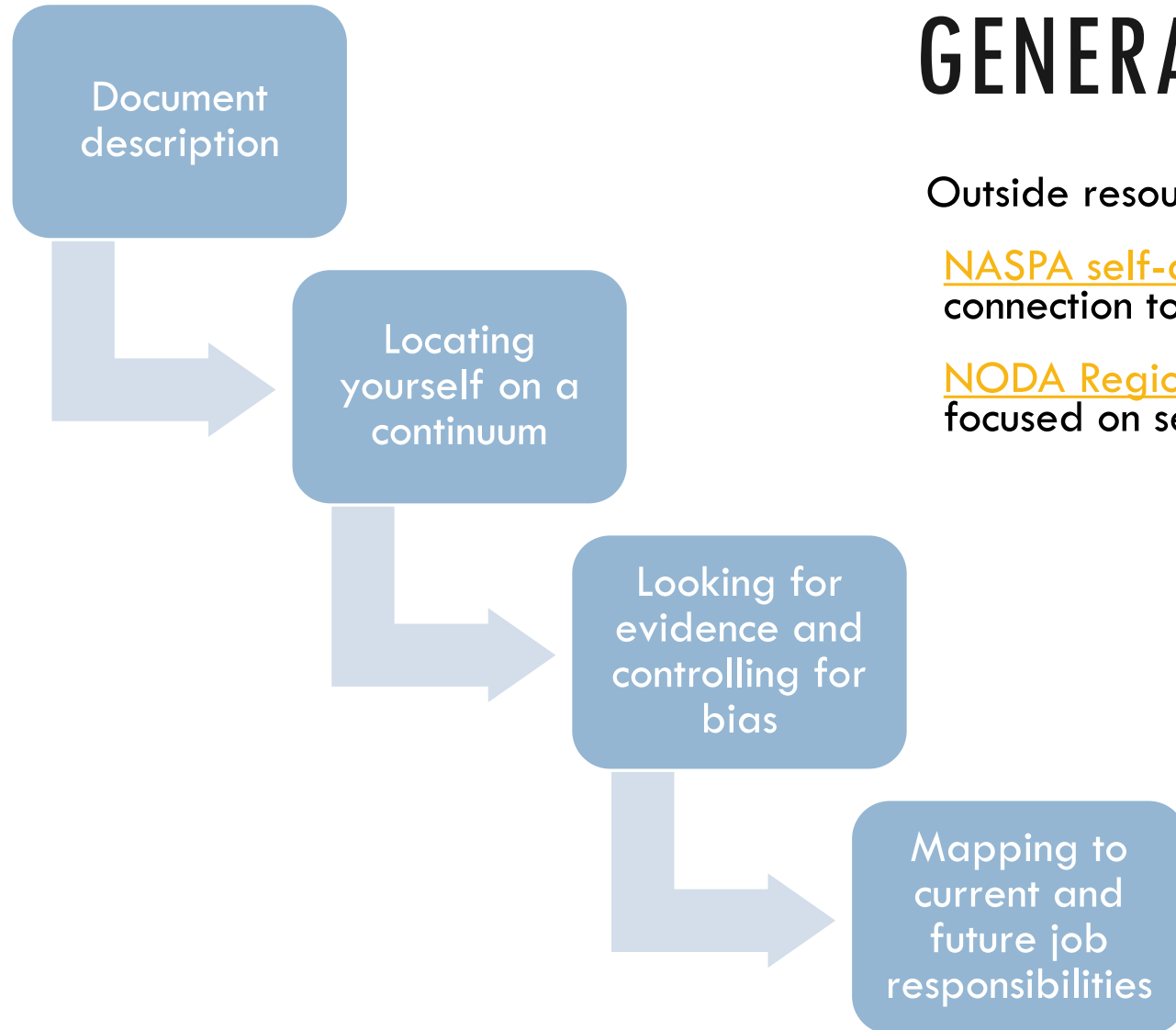
INTRODUCTION



LEARNING OUTCOMES

HISTORY OF STUDENT AFFAIRS COMPETENCIES





GENERAL RUBRIC USAGE

Outside resources:

[NASPA self-assessment tool](#) (more focused on connection to department)

[NODA Region I self-assessment tool](#) (more focused on self relative to all competencies)

CONTEMPORARY USES

Graduate programs

- [Colorado State University](#)
- New York University

Professional organization conferences

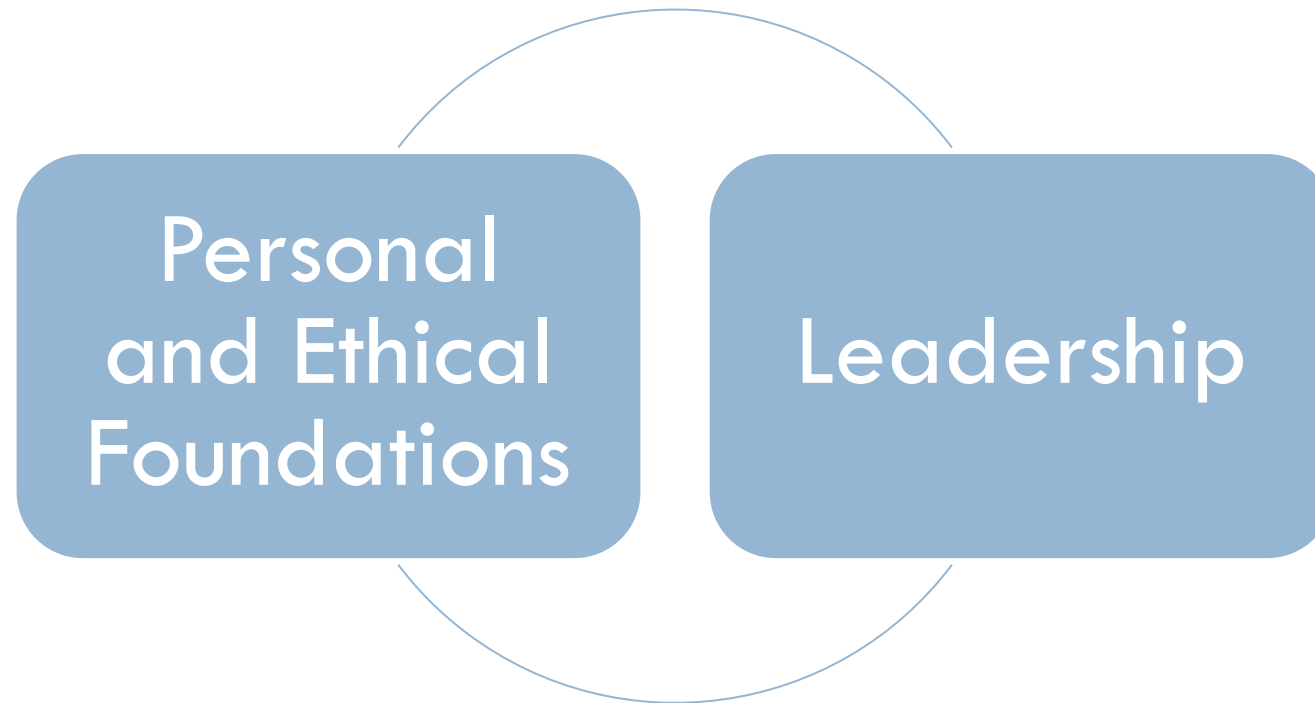
- [ACPA/NASPA](#)
- NODA

Student Affairs Divisions

- [University of Vermont](#)
- RIT

LEVEL SETTING THE DEVELOPMENT OF YOUR ROLE

FOUNDATIONAL COMPETENCIES



PRACTICAL COMPETENCIES

Assessment,
Evaluation, and
Research

Organizational
and Human
Resources

Technology

Advising and
Supporting

STUDENT AFFAIRS COMPETENCIES

Values,
Philosophy,
and History

Law, Policy
and
Governance

Social Justice
and Inclusion

Student
Learning
and
Development



GOAL PURSUIT |



Goal setting is the cognitive work you do before taking action. Identifying and setting the goal is the beginning of the goal pursuit process.



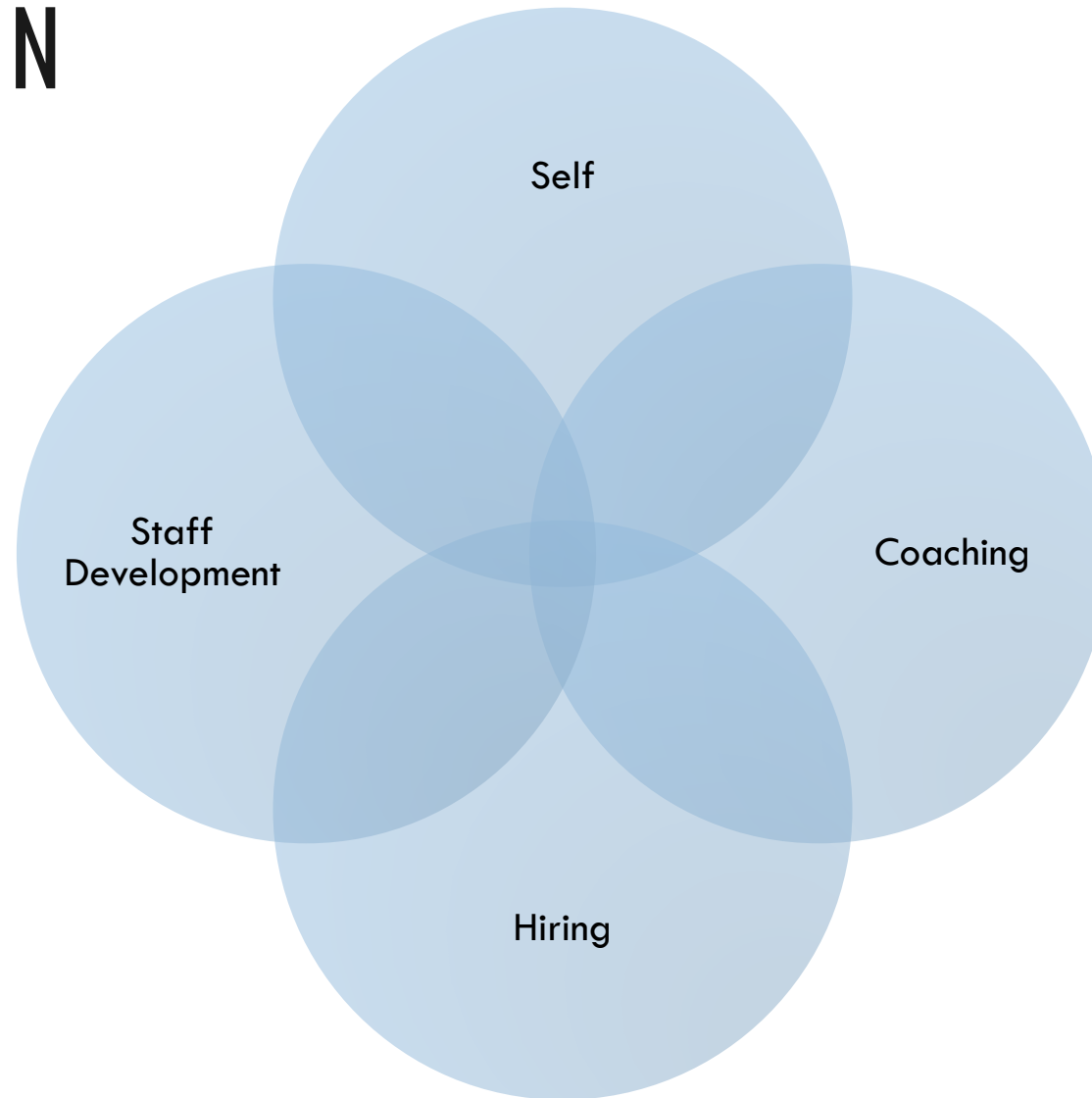
Goal striving is about taking action. Integrating cognitive goal-setting into physical action or reaching the desired endpoint is the act of goal striving.



Goal maintenance is the phase of goal pursuit, where habits kick in, and action becomes more unconscious.

CONCEPT OF GOAL PURSUIT

OVERLAYING A COMPETENCY AREA: DESCRIPTION



OVERLAYING A COMPETENCY AREA: GOAL SETTING

Identifying the competency, sub-topic, and determine the evidence for determining the current level (functional, intermediate, and advance) that you will develop goals around.

At this stage, one must determine to what degree is development necessary to meet current or future professional needs



OVERLAYING A COMPETENCY AREA: GOAL STRIVING



Determining the pathway to achieving the goal of moving up a level

Outline academic and experiential learning opportunities that you will engage in to gain the necessary knowledge.

Outline what the goal attainment looks like

OVERLAYING A COMPETENCY AREA: GOAL MAINTENANCE

After a competency goal is reached, one should select a future date to check for integration evidence. Is it a habit?



RESOURCES

[ACPA short version](#)

[SUNY Brockport short assessment form](#)

[NODA Region I self-assessment tool](#) (more focused on self relative to all competencies)

[Colorado State University SAHE Faculty Advising Manual](#) (a graduate student portfolio expectation)

[Applicability of Competencies outside the US](#) (research article)

[Self-perceived Competence of Senior-level Student Affairs Professionals](#) (dissertation)

Q & A?

