

Native American Center of Excellence

University of Montana



*Wilena Old Person (she/her), BA, Program Coordinator, University of Montana-Skaggs School of Pharmacy, wilena.oldperson@umontana.edu,
Yakama/Blackfeet*

Honoring Original Indigenous Inhabitants: Land Acknowledgment

Land acknowledgment is a traditional custom that dates back centuries in many Native nations and communities. Today, land acknowledgments are used by Native Peoples and non-Natives to recognize Indigenous Peoples who are the original stewards of the lands on which we now live.

<https://native-land.ca/>



Native Knowledge 360°, National Museum of the American Indian



*Es mistéʔes qe es lʔ, ci ʔu l ,T,atʔ
ayaqn u Qlispélix^w sqlix^wúʔulex^ws
t Nʔaycčstm K^wtis Snac̣ ʔqé yṃ
ín. Qe es putʔem ʔu Sqélix^w ṃ iṃ
éʔeyé ms x̣^wl ,olq^wštulex^w ʔu x̣^wl
,qʔ sqlqelix^w.*



University of Montana

"The University of Montana acknowledges that we are in the aboriginal territories of the Salish and Kalispel people. Today, we honor the path they have always shown us in caring for this place for the generations to come."

Created in collaboration with Séliš-Q'lispé Cultural Committee

Me, Myself, & I (Social Location)

- ❖ Indigenous, Yakama/Blackfeet
- ❖ Married to Jason Plain Feather (Crow/Gros Ventre)
- ❖ Mother to four sons (Joel, Alec, Jack, Jase)
- ❖ Pug lover, Hank Nigel Old Person-Plain Feather
- ❖ First Generation College Graduate
- ❖ University of Montana Alumni
- ❖ Missoula County Public Schools Board of Trustee, Chair



Native American v. American Indian

The which term is proper...

- ❖ Native American grew out of the political movements of the 1960's and 1970s
- ❖ Native Americans use a range of words to describe themselves
- ❖ Many prefer their tribal affiliation
- ❖ Also used is Indigenous

Definitions:

American Indian and Alaska Native (AI/AN): Persons belonging to the tribal nations of the continental USA (American Indians) and the tribal nations and villages of Alaska (Alaska Natives).

Native American: All Native people of the USA and its territories (i.e. American Indians, Alaska Natives, Native Hawaiians, Chamorros, and American Samoans), as well as persons from Canadian First Nations and Indigenous communities in Mexico and Central and South American who are U.S. residents

The National Congress of American Indians (NCAI)

NACOE Team

Co-PDs

- Lori Morin, PharmD
- Mark Pershouse, PhD
- Cherith Smith, PharmD*

Staff

- Wilena Old Person*
- Brittney Hunter*
- Gisele Forrest*

**Indigenous*



Faculty

- Katie Holick, PhD*

Funding

Health Resources & Services Administration (HRSA)

The **Health Resources & Services Administration (HRSA)** provides equitable health care to the nation's highest-need communities. Our programs support people with low incomes, people with HIV, pregnant people, children, parents, rural communities, transplant patients, and the health workforce.

Bureau of Health Workforce (BHW)

The **Bureau of Health Workforce (BHW)** strengthens the health workforce and connects skilled health care providers to communities in need. We offer scholarships and loan repayment to students and clinicians. We also award grants to organizations such as schools, hospitals, and health centers to improve health workforce training, increase diversity, and advance health equity.

Funding cont.

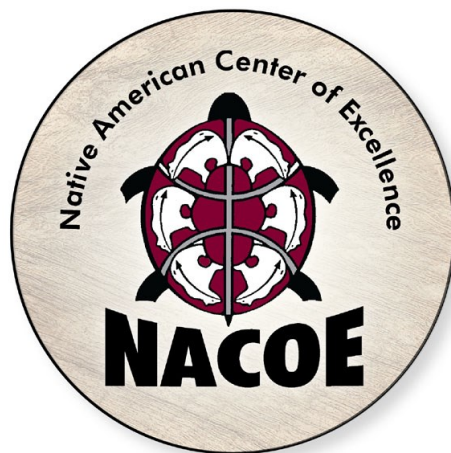
We train the primary care workforce through our Health Professions Training Grants.


These **grants**:

- invite clinicians to practice in areas with limited access to care, including rural areas;
- increase diversity; and
- encourage health care workers to learn from each other.

Our grant programs help create a modern health workforce. They place skilled health care providers in high-need areas nationwide.

Funding focus began in 1993 under Dean Forbes with Dr. Rustem Medora.



A young man with dark hair, smiling, wearing a white lab coat over a blue polo shirt. He is standing in a pharmacy or laboratory setting. In the background, there are shelves with various bottles and containers, and a counter with a sink and a scale.

COLLEGE OF HEALTH, UNIVERSITY OF MONTANA

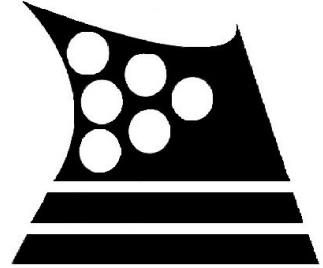
UM AWARDED GRANT TO RECRUIT AND SUPPORT NATIVE PHARMACY STUDENTS

30 AUGUST 2023

Nano Stiffarm, a UM Doctor of Pharmacy and MBA student, is nearing the completion of his degrees and credits NACOE support for helping him get there.

Past Efforts (Funding)

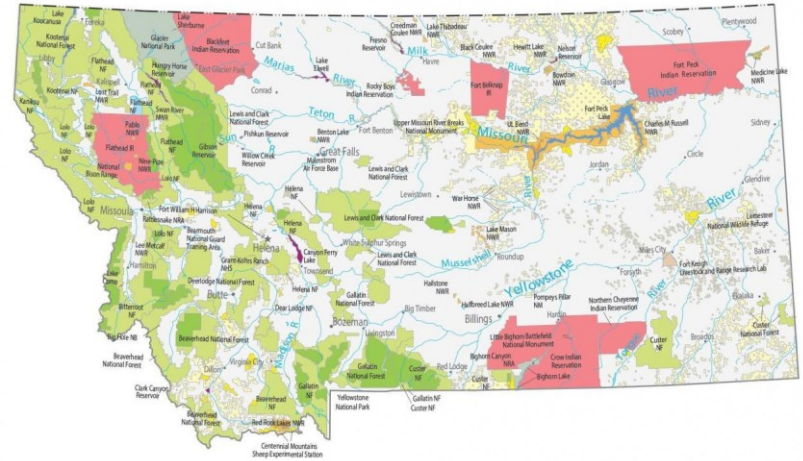
- ❖ 1 Million NCRR Building Grant
- ❖ Millions in a NCMHD Endowment Grant
- ❖ Skaggs Scholarship Program
- ❖ Issksinip Scholarship Program through Blackfeet Community College



Montana

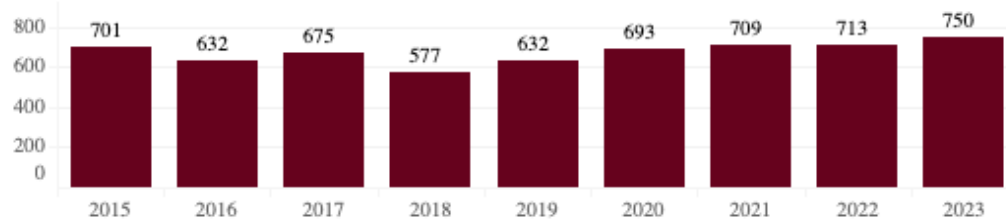
- ❖ **Poor, Rural, Frontier**
- ❖ **82% of Counties are Health Professional Shortage Areas (HPSA)**
- ❖ **7% of Population is American Indian**
 - 7 reservations: Confederated Salish Kootenai Tribe, Blackfeet, Rocky Boy, Ft. Belknap, Crow, Northern Cheyenne, and Ft. Peck
- ❖ **4th Largest State in USA**
 - Small Population
 - 1.104 million (2021)
- ❖ **Only Pharmacy School in the State**

US Census Bureau; HRSA

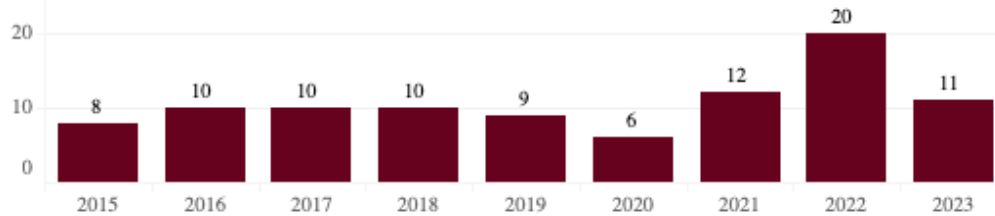


University of Montana

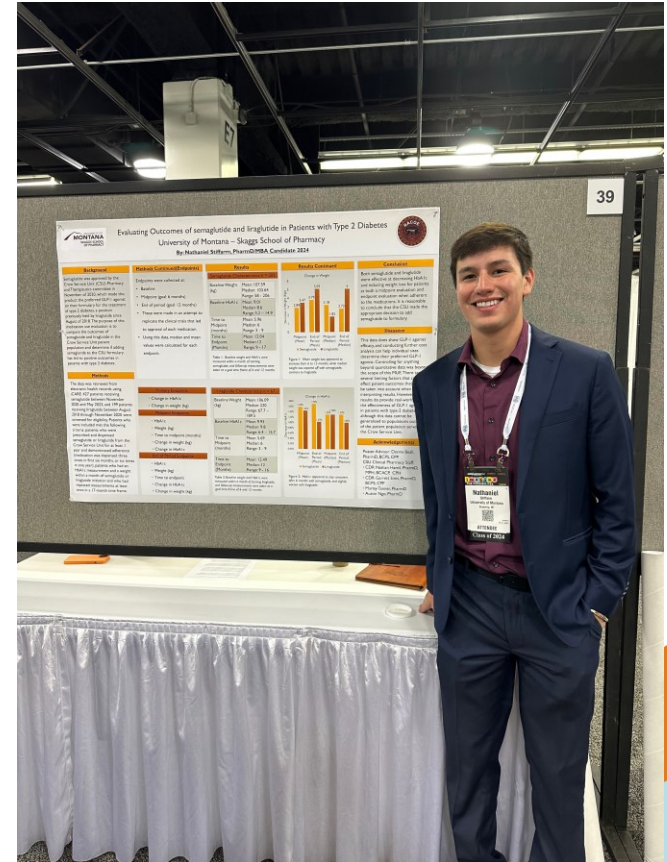
American Indian/Alaska Native at UM



American Indian/Alaska Native in Pharmacy



UM Office of Institutional Research, Census Enrollment



Recruitment

- ❖ High School Career Fairs
- ❖ Montana Tribal College Tour
- ❖ Montana Indian Education Association & National Indian Education
- ❖ National Conferences

- American Indian Science and Engineering (AISES)



October 3-5, 2024, in San Antonio, TX

- Society for Advancement of Chicanos/Hispanics and Native Americans in Science (SACNAS)



October 31-November 2, 2024, in Phoenix, AZ

High School Visits

- ❖ Collaboration with UM Admissions Office and other campus departments
- ❖ Recruitment Presentations and visits to buildings/labs



TCU Partnership

Tribal Outreach Specialist, Dr. Karla Bird *President's Office*

“The Tribal Outreach Specialist is a pivotal role in helping UM create and sustain meaningful relationships with tribal communities while building bridges for Native students to pursue higher education and realize their dreams.”

-President Bodnar

Dr. Bird serves as a UM liaison to tribal communities in the region, as a key adviser and partner to the campus community, and as a resource and support to prospective and current Native students.



Montana Tribal Colleges



Aaniih Nakoda
College
Harlem, MT



Blackfeet Community
College
Browning, MT



Chief Dull Knife
College
Lame Deer, MT



Fort Peck
Community
College
Poplar, MT



Tribal Colleges &
Universities
Information
(history)



Little Big Horn
College
Crow Agency, MT



Salish Kootenai College
Pablo, MT



Stone Child College
Box Elder, MT

Montana Tribal College Tour

Annually in Spring

Two weeks of driving, spend a full day at Tribal College

Connect with other Institutions on Tour

Build relationships with TCU Admissions office staff

Maintain relationships with Tribal College staff/faculty/admin



President Bodnar

Annual Tribal College President meeting



President Bodnar



President Bodnar



In the Halls, and on the Walls

Important for Indigenous students to see themselves in your institution.

- ❖ Policies and Procedures (i.e. smudging policy, cultural leave policy)
- ❖ Representation in staff/faculty
- ❖ Peer Connection
- ❖ Cultural Events



Kyiyo Annual Celebration

Largest Diversity event on campus, and community.

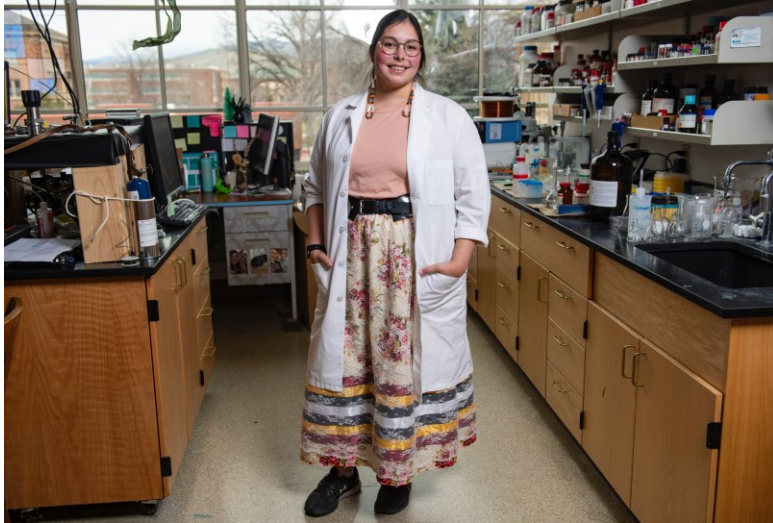
Student run powwow

Alumni return and visitors from across state and region.

ASUM Advisors: Wilena Old Person



Representation Matters



Representation Matters

The Payne Family Native American Center

Houses the academic department of Native American Studies, student support services in American Indian Student Services, and student space including study/lounge areas.



UM Commencement



Recruitment of AI/AN into Pharmacy



Increase the Number of Natives in Pharmacy

- ❖ Student focused
- ❖ One on one support
- ❖ Team focus on student
- ❖ Advocacy with faculty and Admin



Improve Cultural Awareness, Sensitivity

Prepare Students to Better Serve American Indian/Alaska Native Patients

- Elective course in Minority Health Issues
- Incorporate Cultural Concepts into Existing Curriculum
- Involve Students in a Research Project
- Clinical Clerkships in Indian Health Service/ Tribal Sites/ Urban Clinics

Retention Activities

- ❖ Free Tutoring
- ❖ Academic Advising
- ❖ Financial Aid Advising
- ❖ Native American Mentoring
- ❖ School's Early Warning System



Professional Development & Networking

- ❖ National Conferences
- ❖ Native American Student Advocacy Institute (NASAI), The College Board
- ❖ Scholarship Reviewer for Indigenous Education, Inc and AISES



Best Part of the Job

Native Pharmacist





Questions?

Contact Information

- Wilena Old Person
 - wilena.oldperson@umontana.edu
 - (406) 243-4097
- Native American Center of Excellence
 - www.umt.edu/native-american-center-of-excellence/
- University of Montana
 - <https://www.umt.edu/>



Works Cited

- American Indian College Fund, Tribal Colleges and Universities
- Minthorn, R., Chávez, A. (2015). Indigenous Leadership in Higher Education. New York, NY: Routledge
- Native Knowledge 360°, National Museum of the American Indian website
- Pewewardy, C., Lees, A., and Minthorn, R. (2022). Unsettling Settler-Colonial Education. New York, NY: Teachers College Press
- Shotton, H. (2013). Beyond The Asterisk. Sterling, VA: Stylus Publishing, LLC
- Tachine, A. (2022). Native Presence and Sovereignty in College. New York, NY: Teachers College Press
- The National Congress of American Indians (NCAI)
- University of Montana Office of Institutional Research, Census Enrollment
- US Census Bureau