

2009 National Pharmacist Workforce Study

Visual Data

Source: The National Pharmacist
Workforce Study, March 2009

1727 KING STREET
ALEXANDRIA, VA 22314

703-739-2330

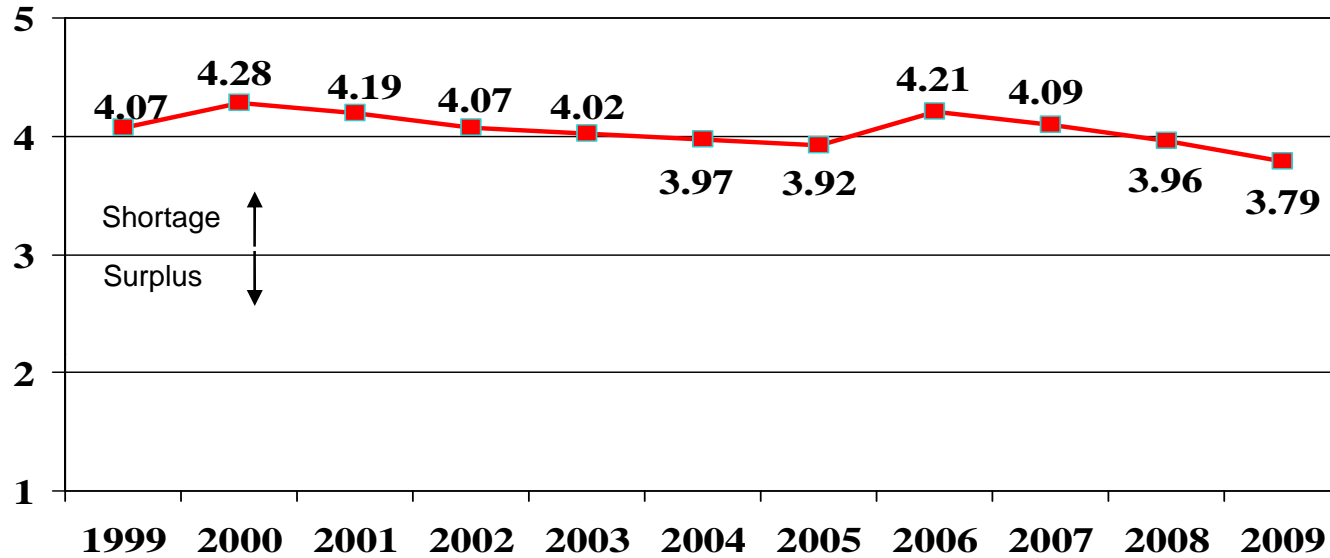
FEDERAL ID# 54-1569970



PHARMACY
MANPOWER
PROJECT, INC.

Figure 1.1: National Aggregate Demand Index Values

<http://www.pharmacymanpower.com/>



Source: Dr. Katherine Knapp

1 = supply exceeds demand, 2 = some excess of supply, 3 = balance,
4 = moderate difficulty in filling vacancies, 5 = difficulty in filling vacancies

Source: The National Pharmacist
Workforce Study, March 2009

1727 KING STREET
ALEXANDRIA, VA 22314

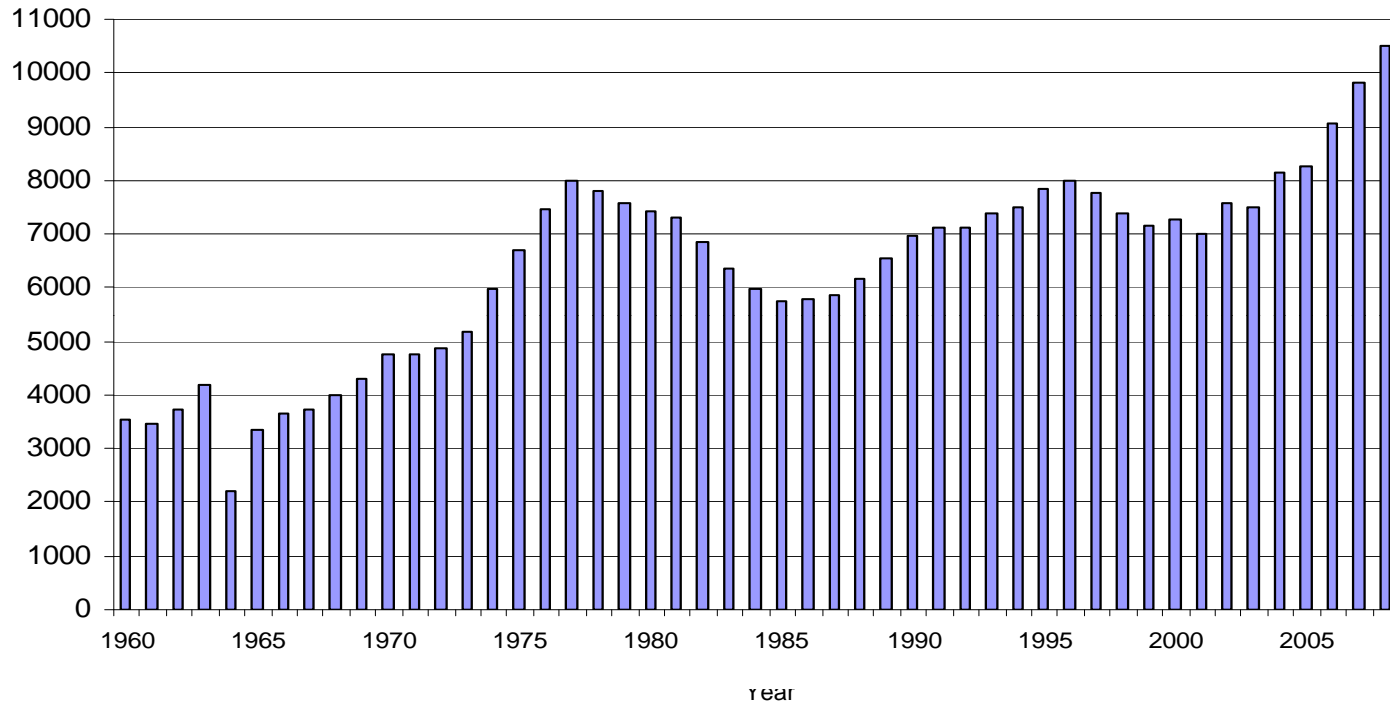
703-739-2330

FEDERAL ID# 54-1569970



PHARMACY
MANPOWER
PROJECT, INC.

Figure 1.2: Number of U.S. Pharmacy School Graduates: 1960-2008



Source: Data from AACP website, www.aacp.org

Source: The National Pharmacist Workforce Study, March 2009

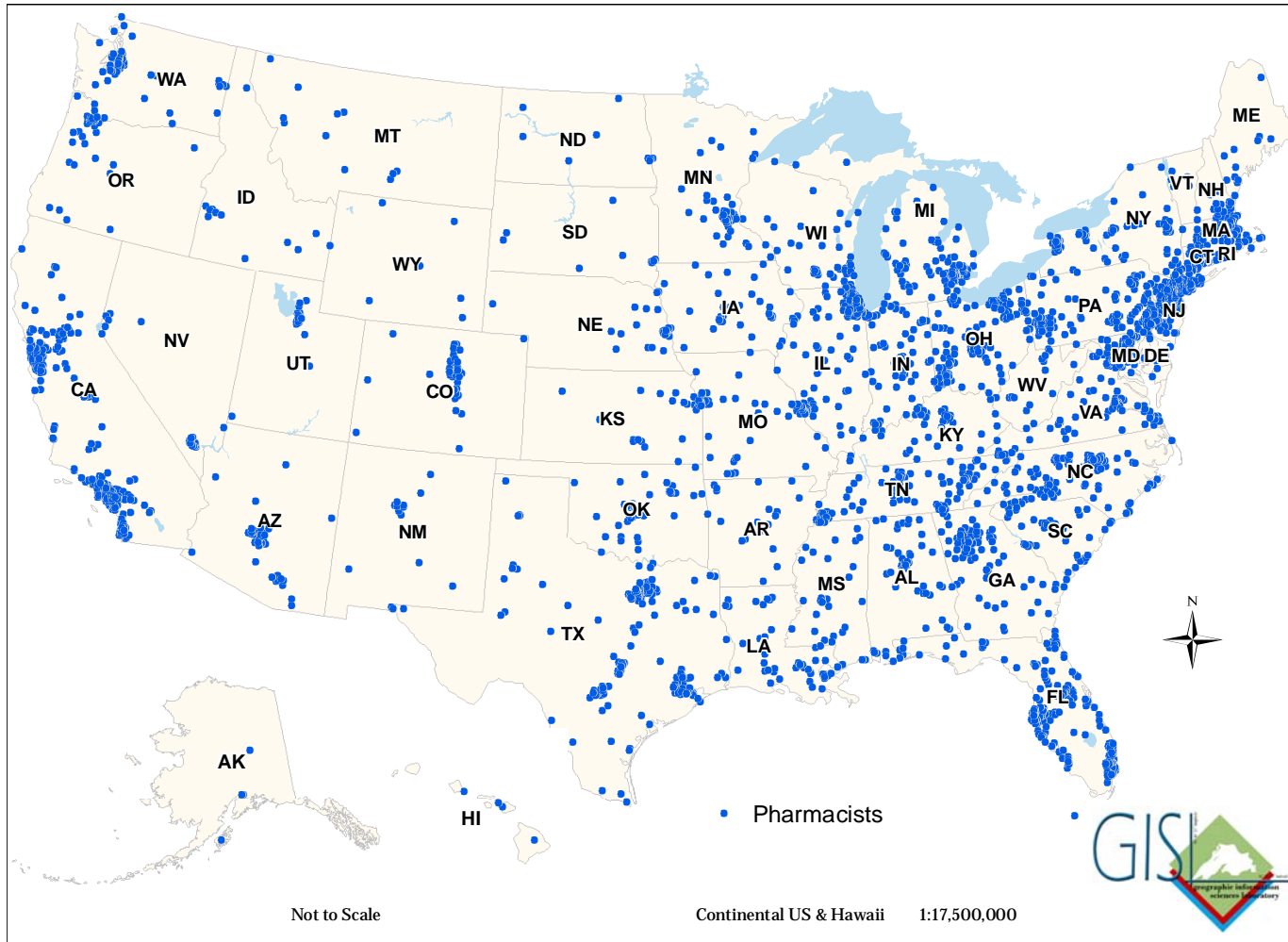
1727 KING STREET
ALEXANDRIA, VA 22314

703-739-2330

FEDERAL ID# 54-1569970



2009 National Pharmacist Workforce Survey: Sample Distribution (n = 3,000)



Source: The National Pharmacist Workforce Study, March 2009

1727 KING STREET
ALEXANDRIA, VA 22314

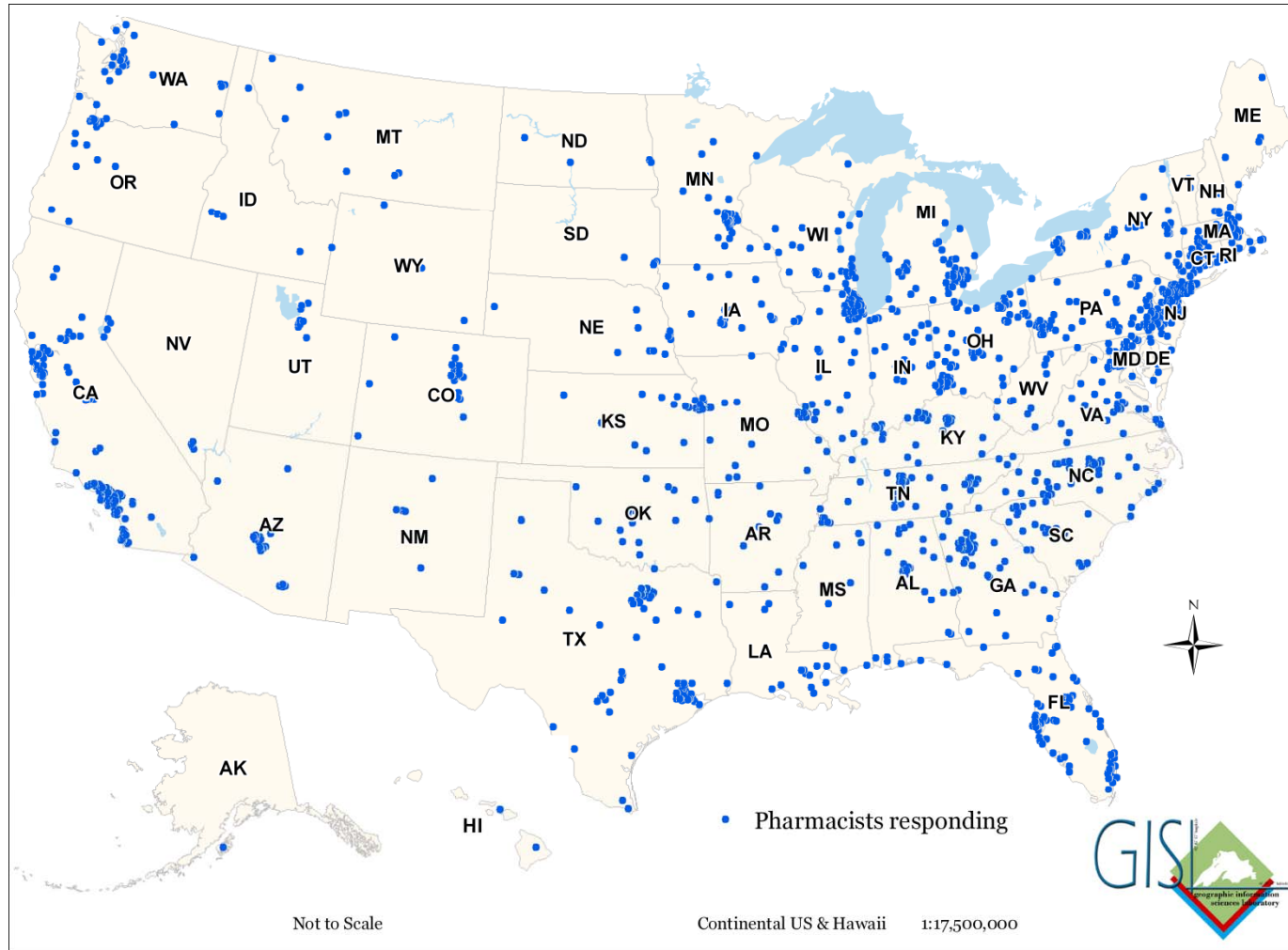
703-739-2330

FEDERAL ID# 54-1569970



PHARMACY
MANPOWER
PROJECT, INC.

2009 National Pharmacist Workforce Survey: Respondent Distribution (n = 1,391)



Source: The National Pharmacist
Workforce Study, March 2009

1727 KING STREET
ALEXANDRIA, VA 22314

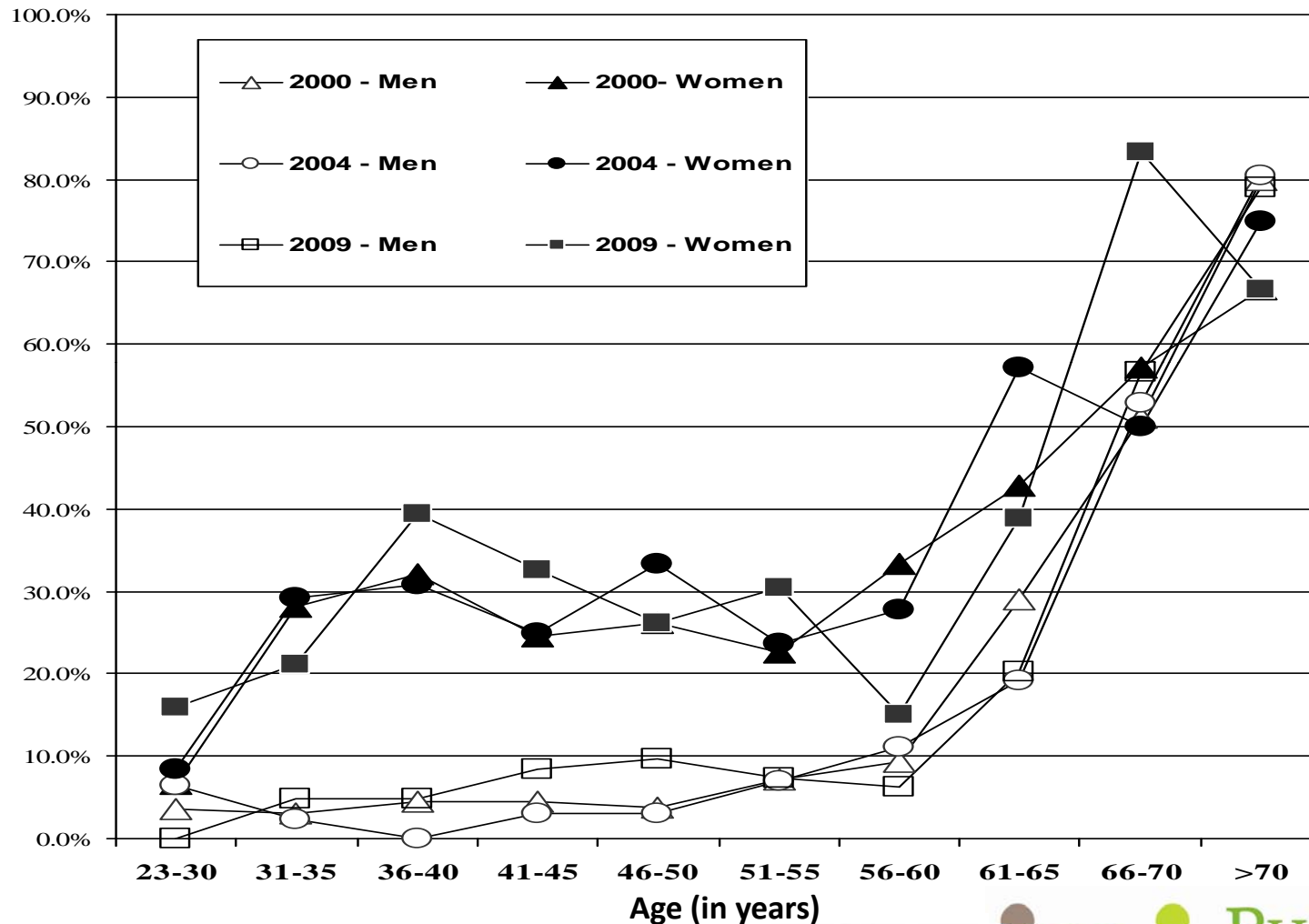
703-739-2330

FEDERAL ID# 54-1569970



PHARMACY
MANPOWER
PROJECT, INC.

Proportion of Actively Practicing Pharmacists Working Part-time by Age Group and Gender



Source: The National Pharmacist Workforce Study, March 2009

1727 KING STREET
ALEXANDRIA, VA 22314

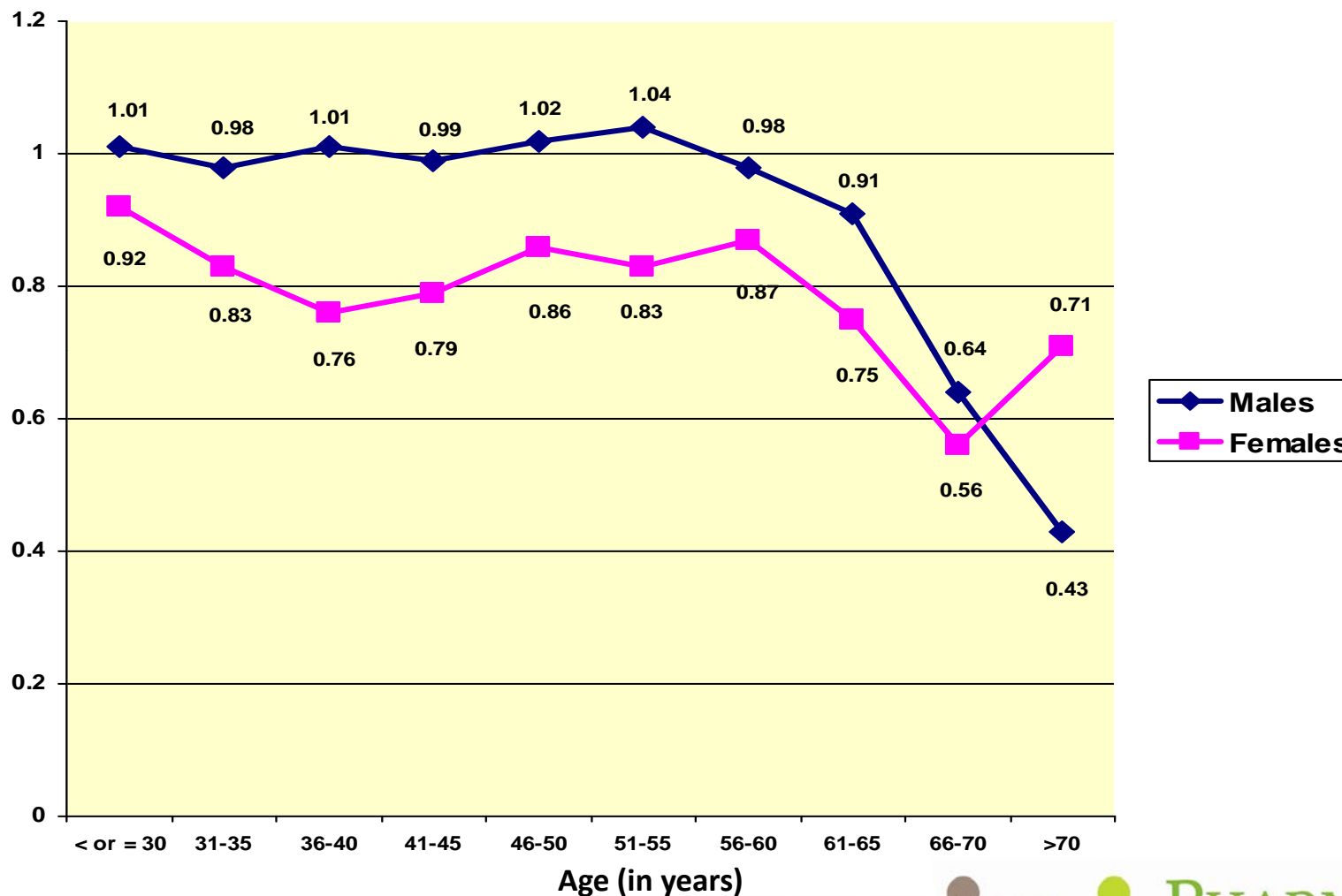
703-739-2330

FEDERAL ID# 54-1569970



PHARMACY
MANPOWER
PROJECT, INC.

Summary of Actively Practicing Pharmacists' Mean Full-Time Equivalent (FTE) Contributions in Primary Employment during 2009



Source: The National Pharmacist Workforce Study, March 2009

1727 KING STREET
ALEXANDRIA, VA 22314

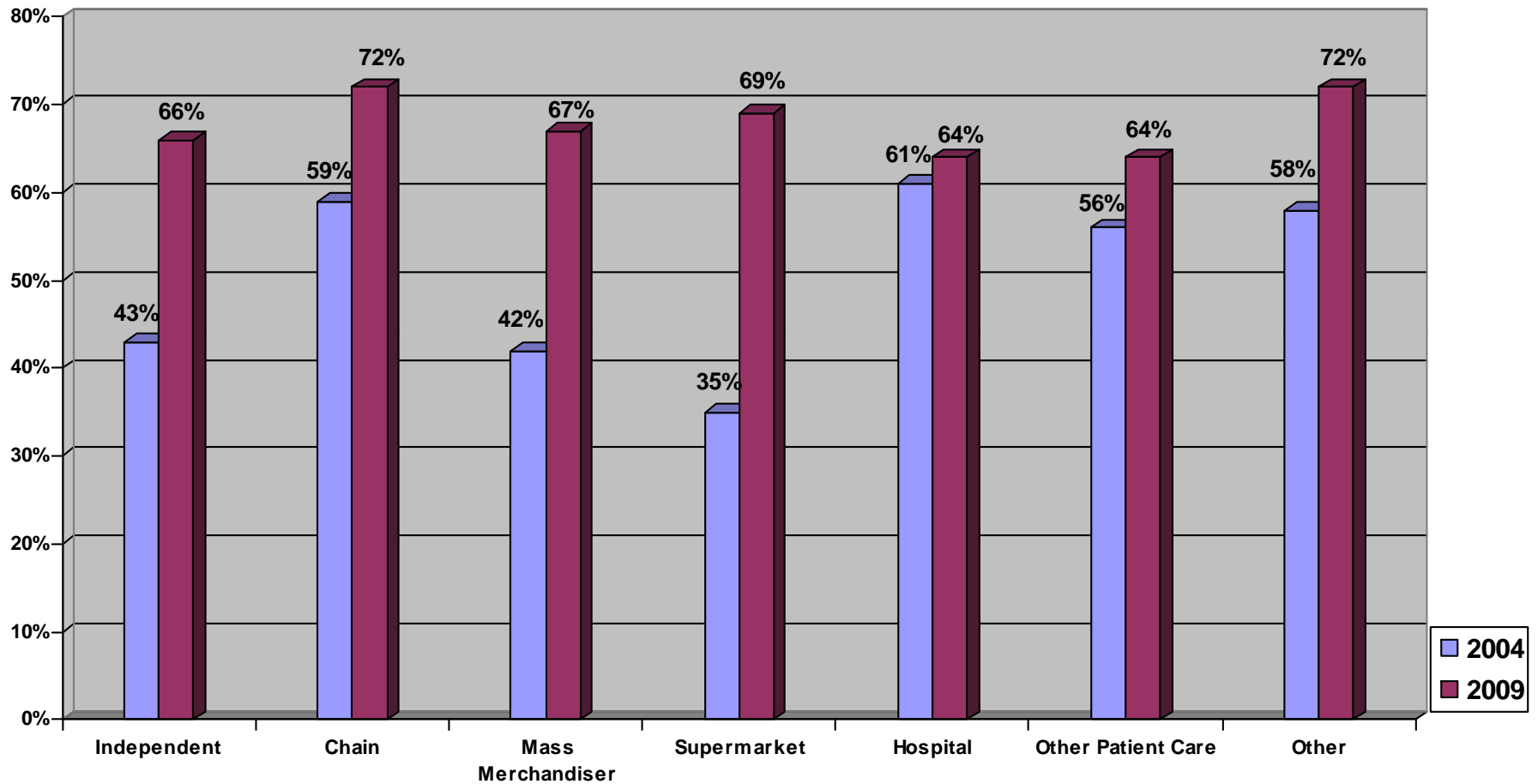
703-739-2330

FEDERAL ID# 54-1569970



PHARMACY
MANPOWER
PROJECT, INC.

Proportion of Pharmacists Who Rated Workload as High or Excessively High (2009 vs. 2004) by Work Setting



Source: The National Pharmacist Workforce Study, March 2009

1727 KING STREET
ALEXANDRIA, VA 22314

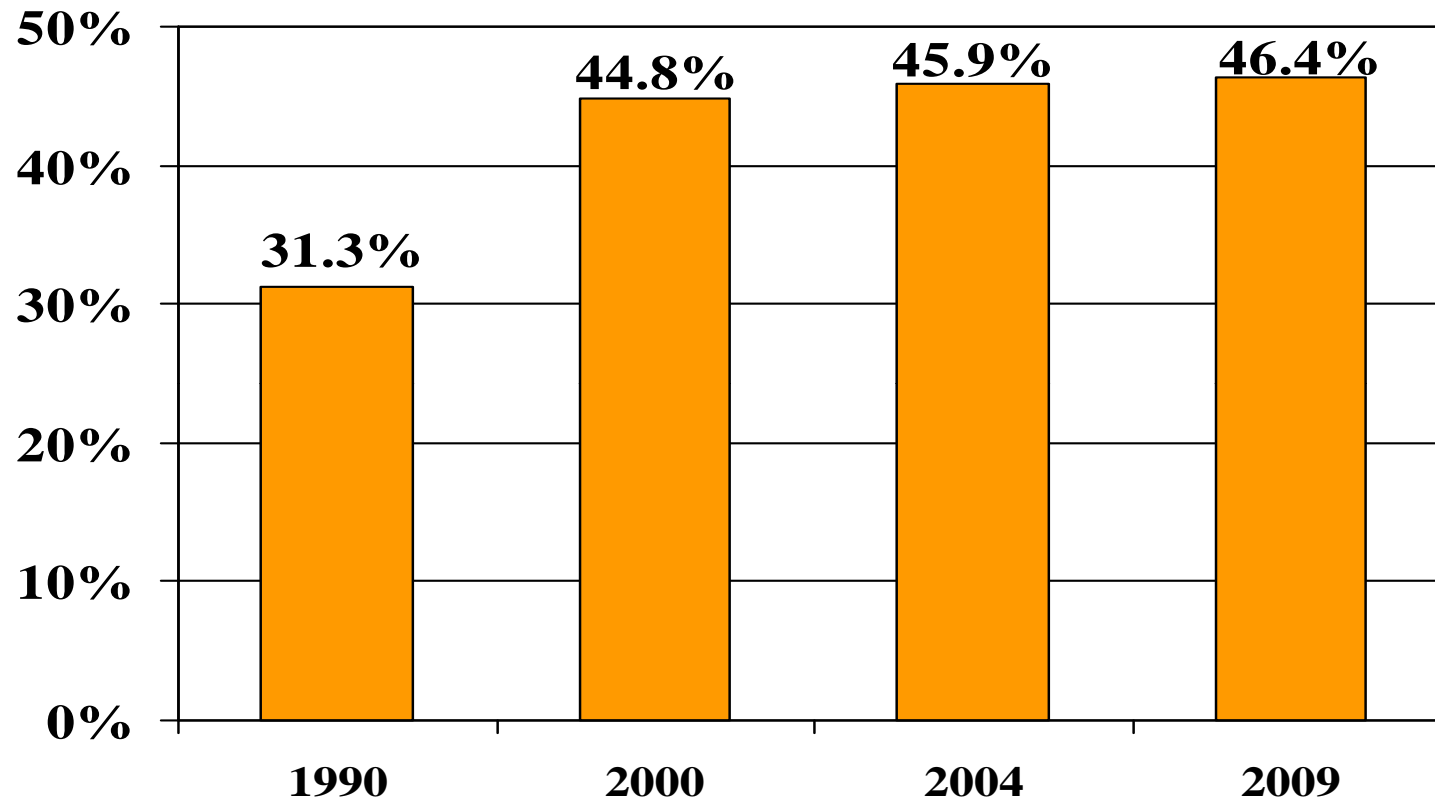
703-739-2330

FEDERAL ID# 54-1569970



PHARMACY
MANPOWER
PROJECT, INC.

Percentage of Actively Practicing Pharmacists That Are Female: 1990, 2000, 2004, 2009



Source: Mott, et al. J. Am. Pharm. Assoc. 46(3), 2006 and 2009 National Pharmacist Workforce Survey

Source: The National Pharmacist Workforce Study, March 2009

1727 KING STREET
ALEXANDRIA, VA 22314

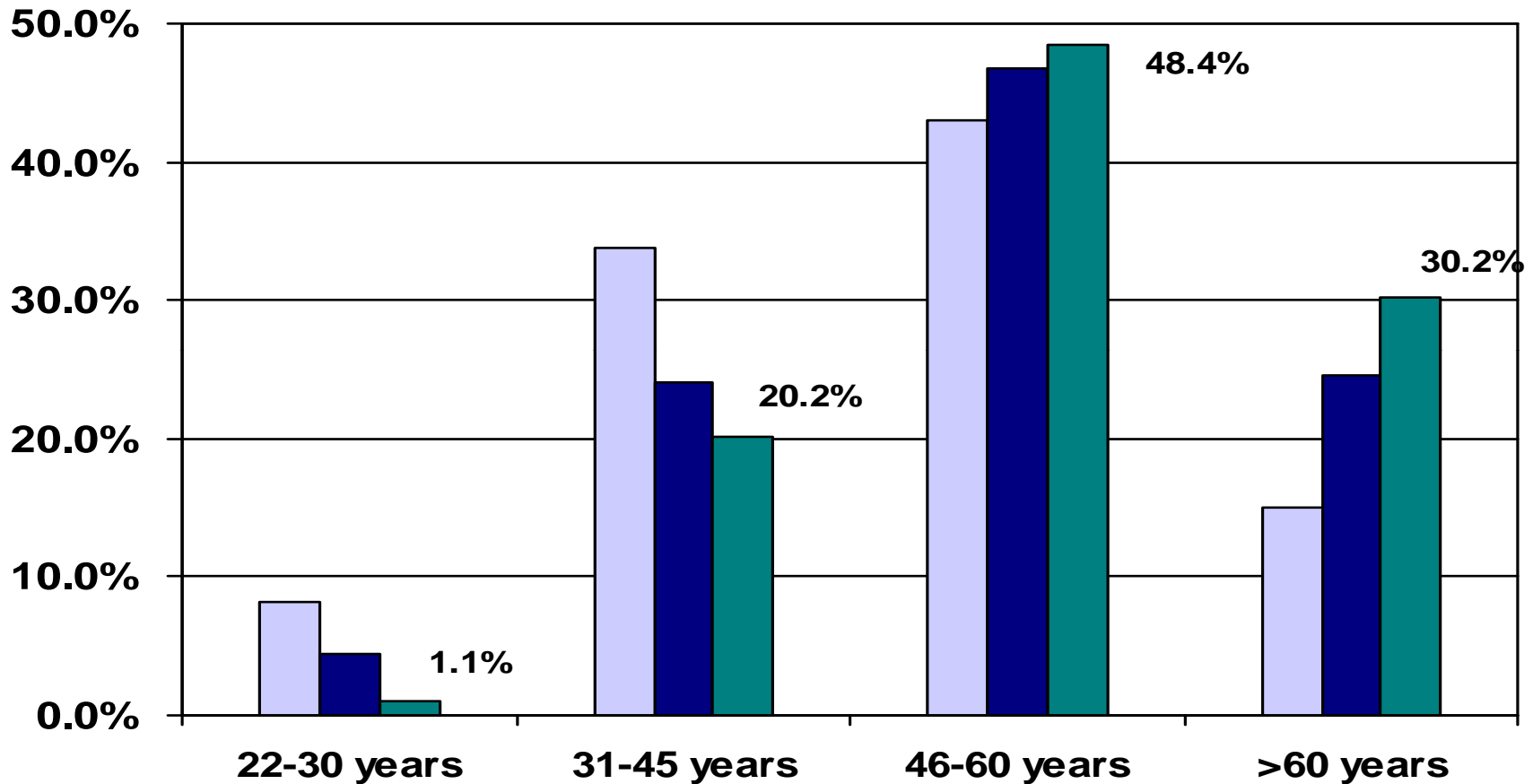
703-739-2330

FEDERAL ID# 54-1569970



PHARMACY
MANPOWER
PROJECT, INC.

Age Distribution of Actively Practicing Male Pharmacists: 2000, 2004, 2009



Of males 46-60 in 2009, 41% were ages 56-60 and 24% were ages 46-50.
Source: Mott et al., 2010.

2000 2004 2009

Source: The National Pharmacist Workforce Study, March 2009

1727 KING STREET
ALEXANDRIA, VA 22314

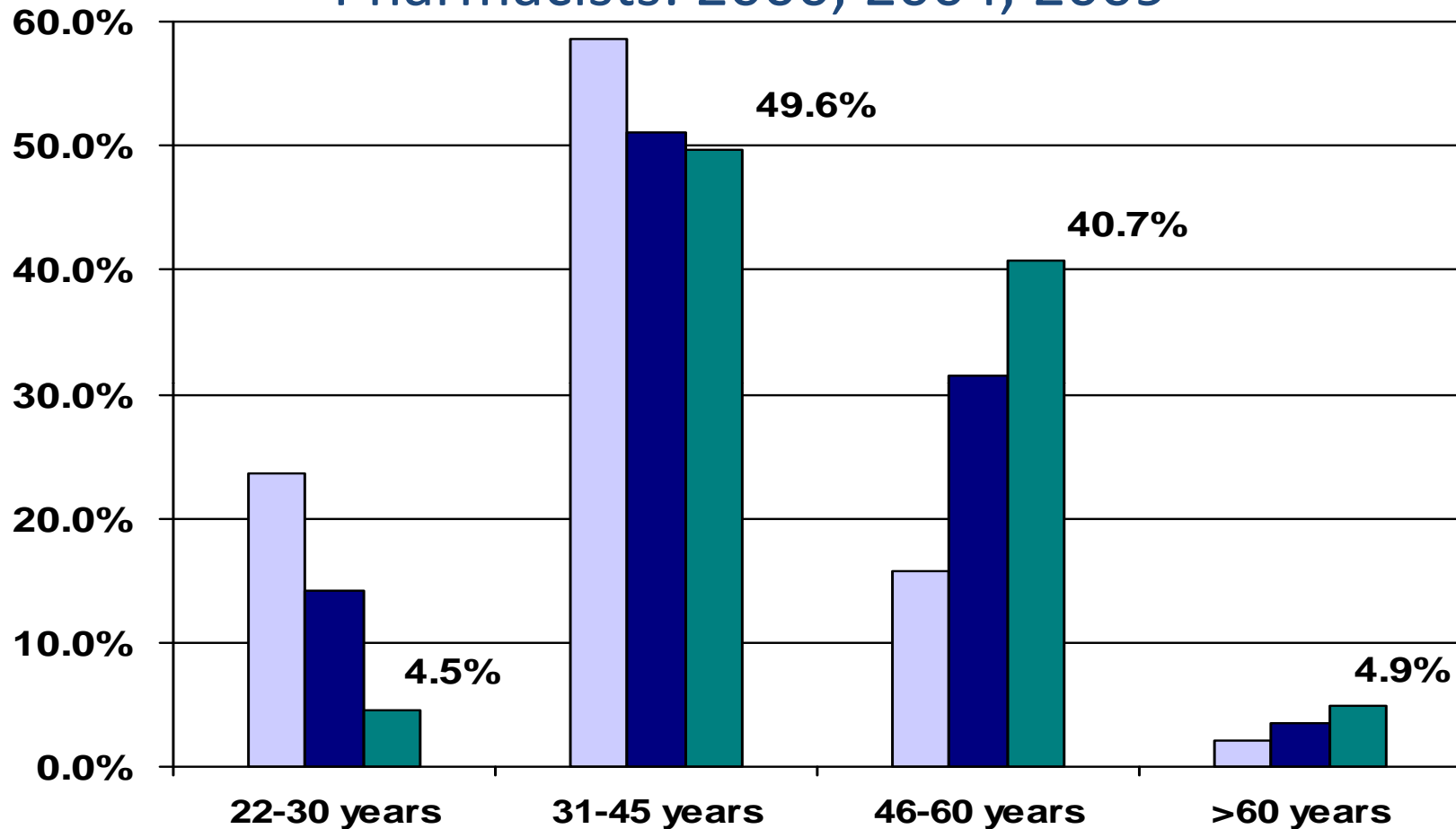
703-739-2330

FEDERAL ID# 54-1569970



PHARMACY
MANPOWER
PROJECT, INC.

Age Distribution of Actively Practicing Female Pharmacists: 2000, 2004, 2009



Of females age 31-45 in 2009, 36% were ages 41-45.
 Of females age 46-60 in 2009, 18% were ages 56-60.
 Source: Mott et al., 2010.

Source: The National Pharmacist
 Workforce Study, March 2009

2000
 2004
 2009

1727 KING STREET
 ALEXANDRIA, VA 22314

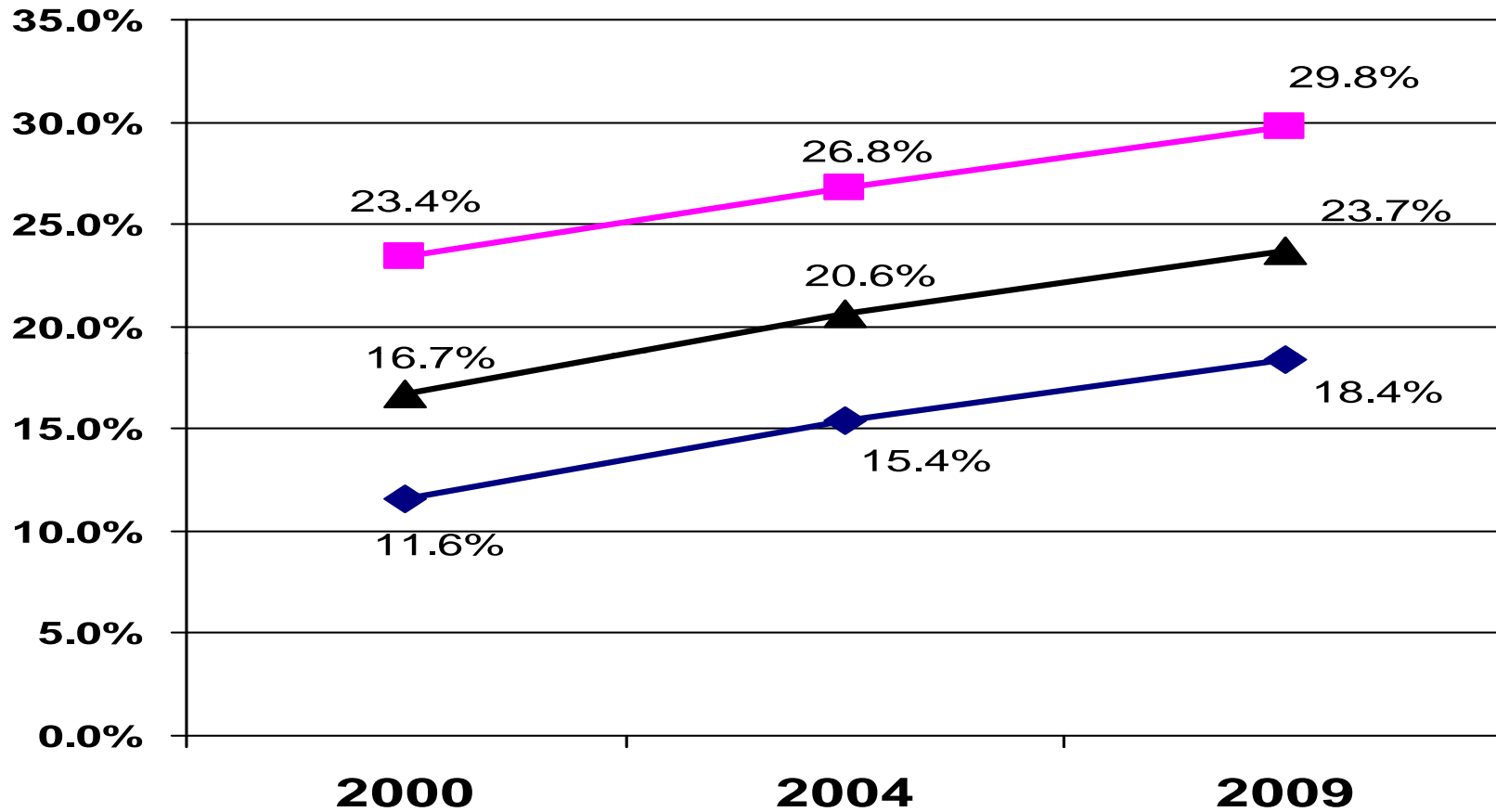
703-739-2330

FEDERAL ID# 54-1569970



PHARMACY
 MANPOWER
 PROJECT, INC.

Rate of Part-time Work (<=30hrs/wk) by Gender: 2000, 2004, 2009



Source: Mott et al., 2010.

◆ Males
 ■ Females
 ▲ Total

Source: The National Pharmacist Workforce Study, March 2009

1727 KING STREET
ALEXANDRIA, VA 22314

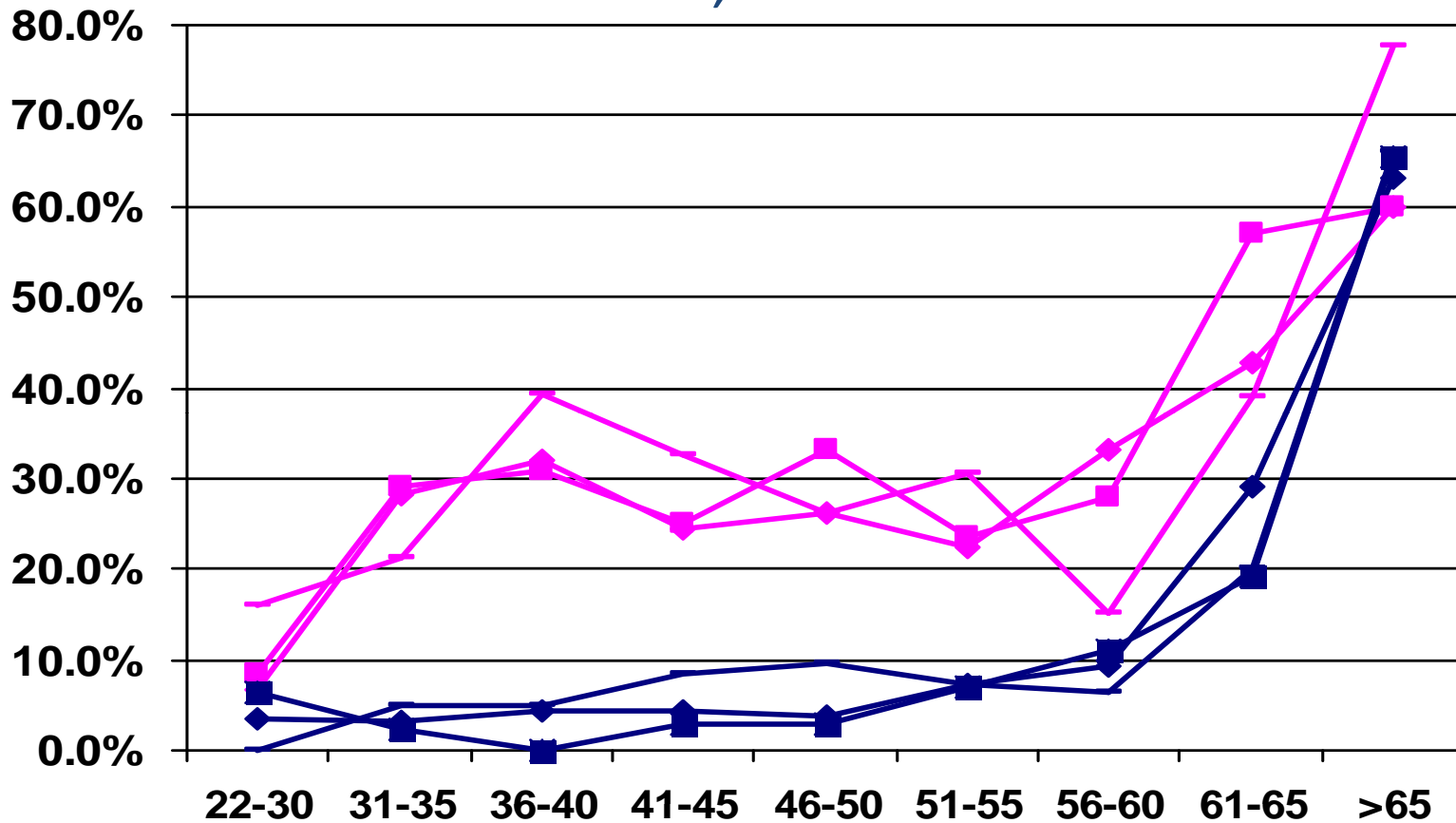
703-739-2330

FEDERAL ID# 54-1569970



PHARMACY
MANPOWER
PROJECT, INC.

Rate of Part-time Work by Age Group & Gender: 2000, 2004, 2009



Source: Mott et al., 2010.

◆ 2000 - Females ■ 2004 - Females — 2009 - Females
◆ 2000 - Males ■ 2004 - Males — 2009 - Males

Source: The National Pharmacist Workforce Study, March 2009

1727 KING STREET
ALEXANDRIA, VA 22314

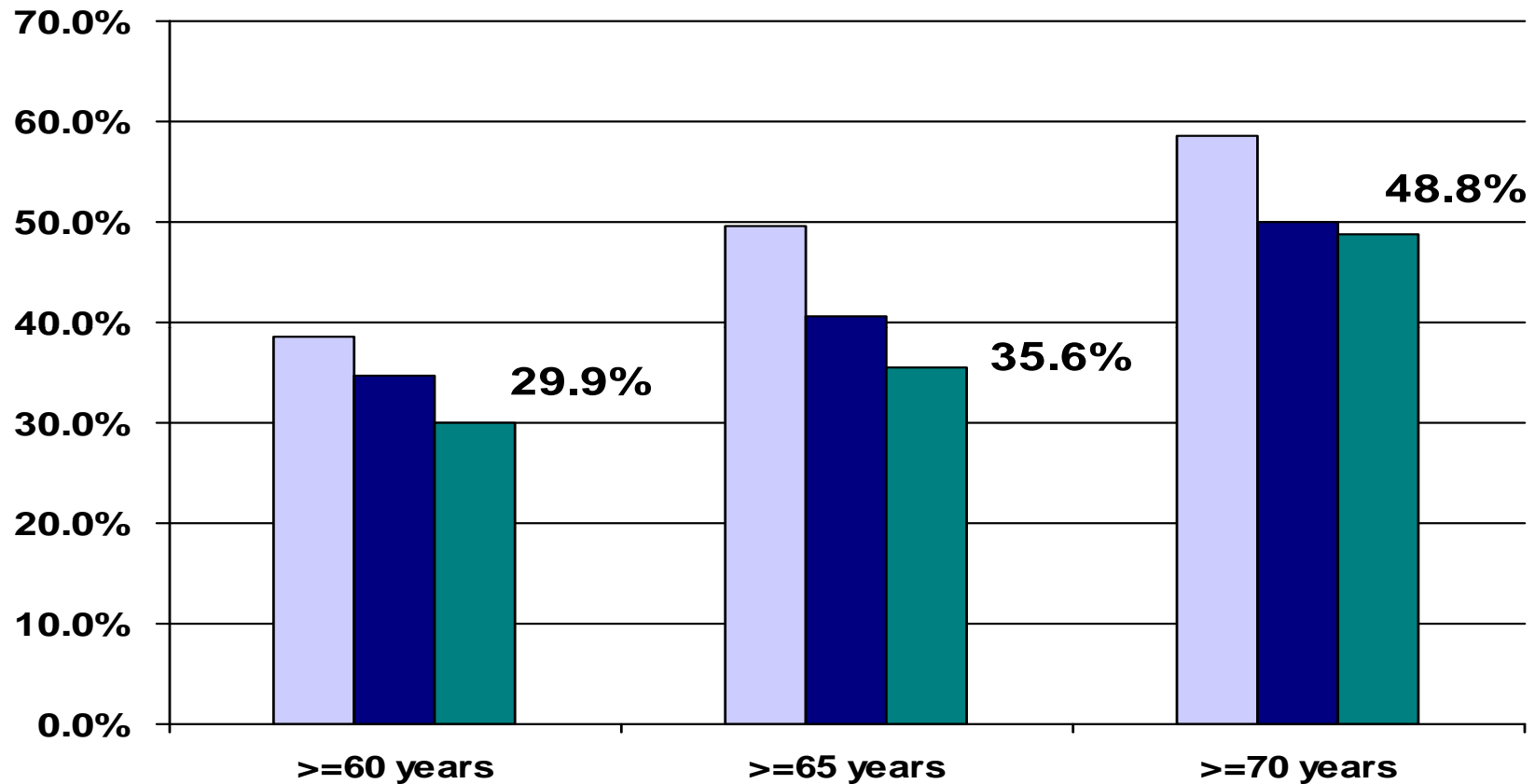
703-739-2330

FEDERAL ID# 54-1569970



**PHARMACY
MANPOWER
PROJECT, INC.**

Percent of Male Licensed Pharmacists Retired by Age Group: 2000, 2004, 2009



Source: Mott et al., 2010.

■ 2000 ■ 2004 ■ 2009

Source: The National Pharmacist Workforce Study, March 2009

1727 KING STREET
ALEXANDRIA, VA 22314

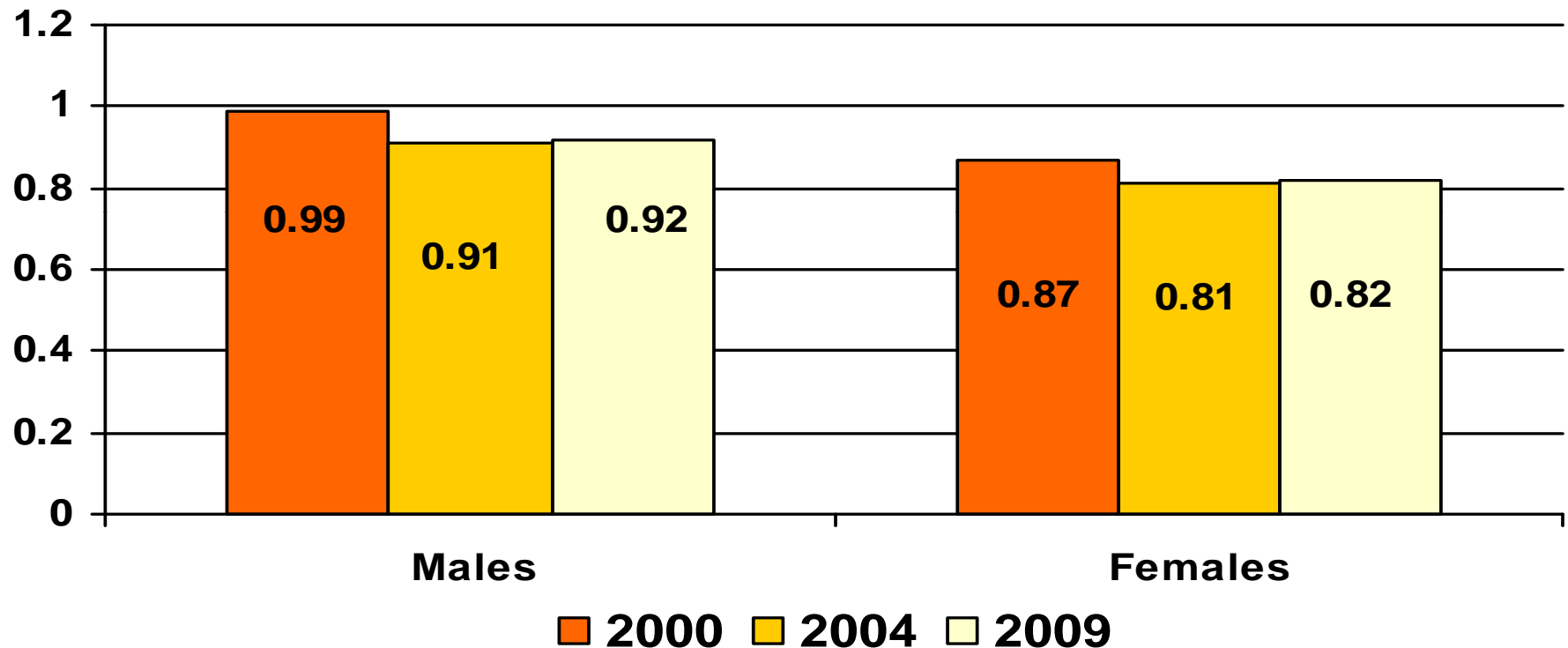
703-739-2330

FEDERAL ID# 54-1569970



PHARMACY
MANPOWER
PROJECT, INC.

Full-time Equivalent (FTE) for Male and Female Active Pharmacists: 2000, 2004, 2009



Source: Mott, et al. J. Am. Pharm. Assoc. 46(3), 2006 and 2009 National Pharmacist Workforce Survey

Source: The National Pharmacist Workforce Study, March 2009

1727 KING STREET
ALEXANDRIA, VA 22314

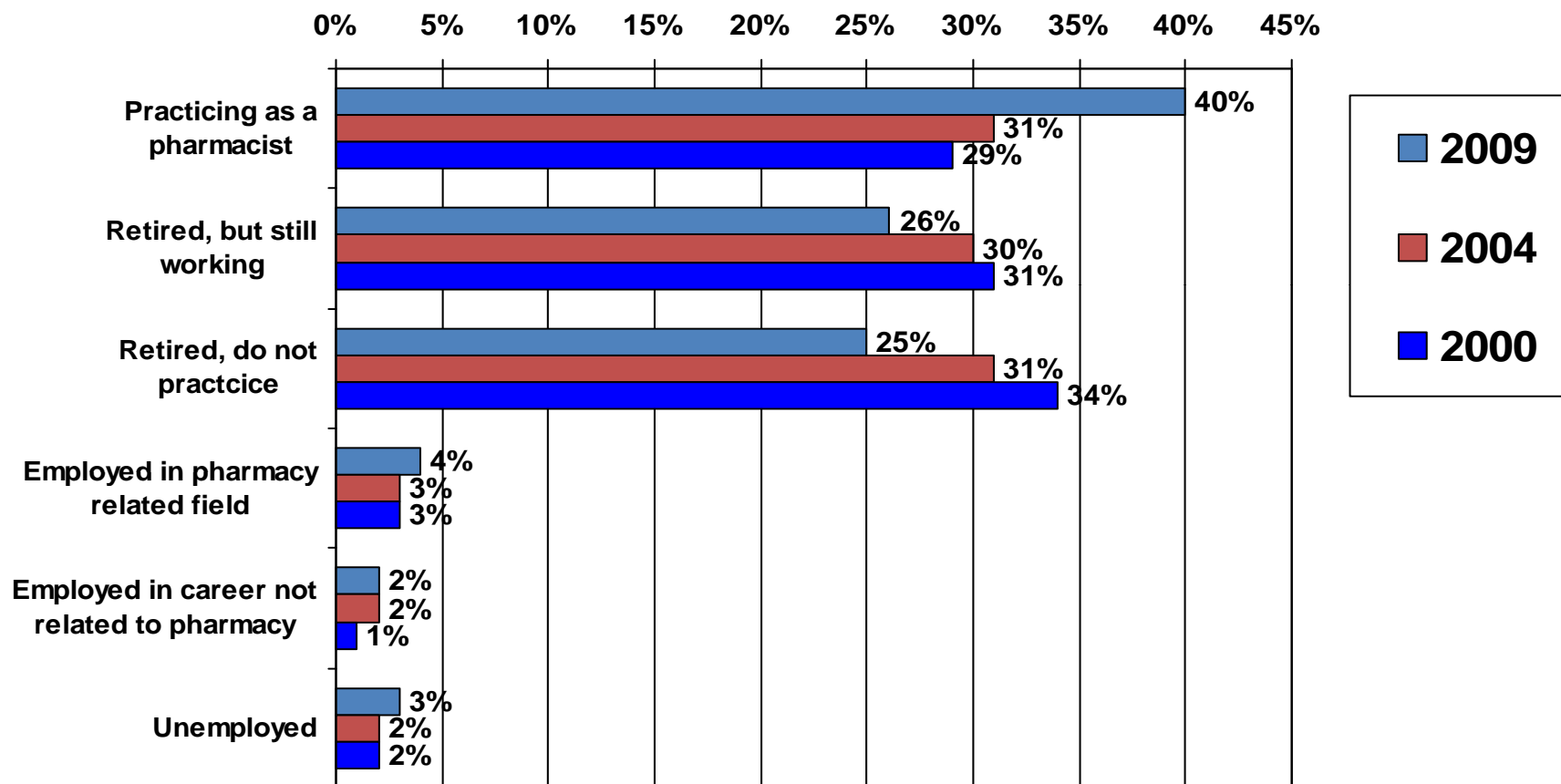
703-739-2330

FEDERAL ID# 54-1569970



PHARMACY
MANPOWER
PROJECT, INC.

Employment Status for Pharmacists Over 60 Years Old: 2000, 2004, 2009



Source: The National Pharmacist Workforce Study, March 2009

1727 KING STREET
ALEXANDRIA, VA 22314

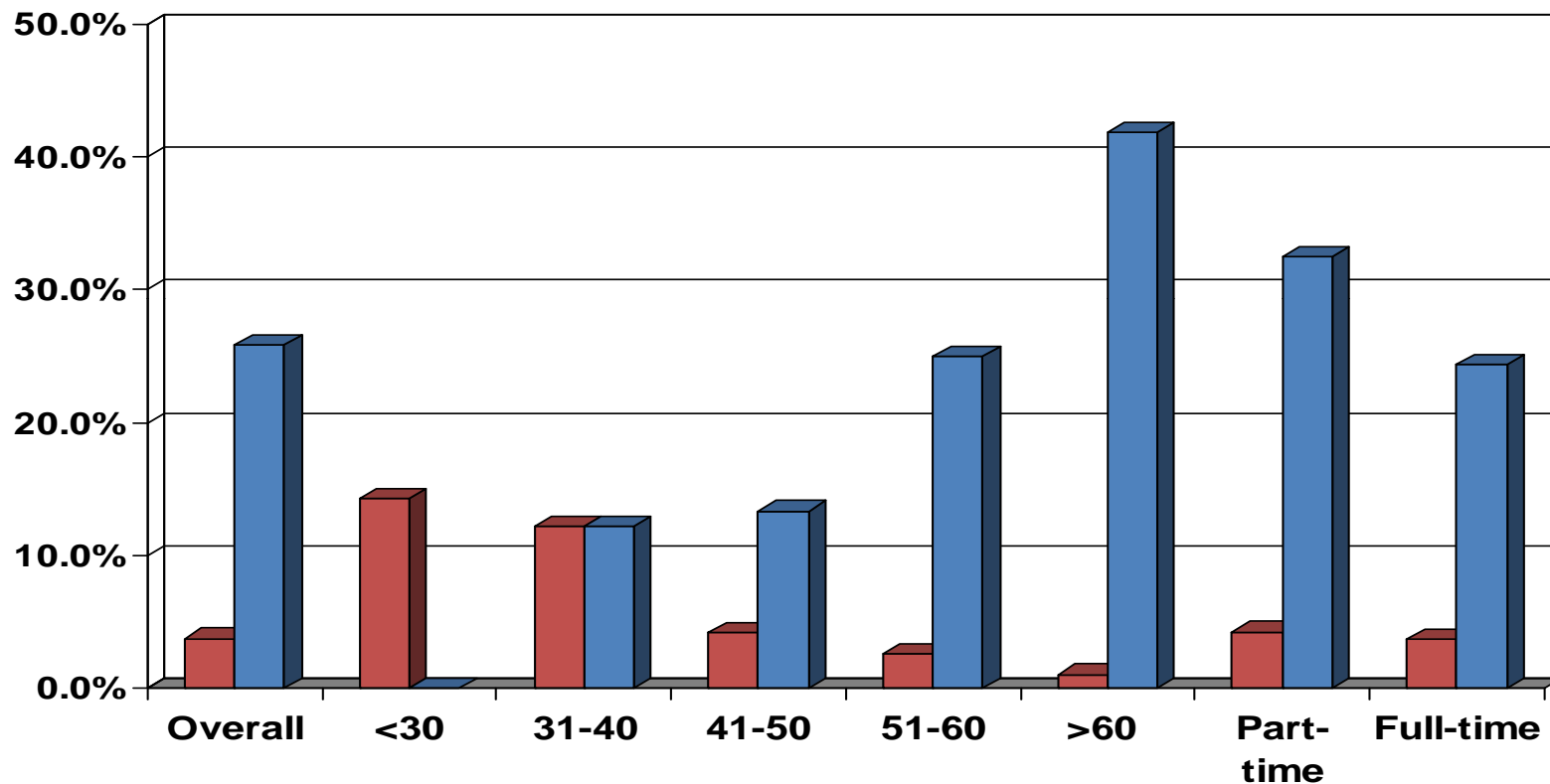
703-739-2330

FEDERAL ID# 54-1569970



PHARMACY
MANPOWER
PROJECT, INC.¹⁶

Work Plans in Three Years for Male Active Pharmacists: 2009



Source: Mott et al., 2010.

■ Work More Hours ■ Work Fewer Hours

Source: The National Pharmacist
Workforce Study, March 2009

1727 KING STREET
ALEXANDRIA, VA 22314

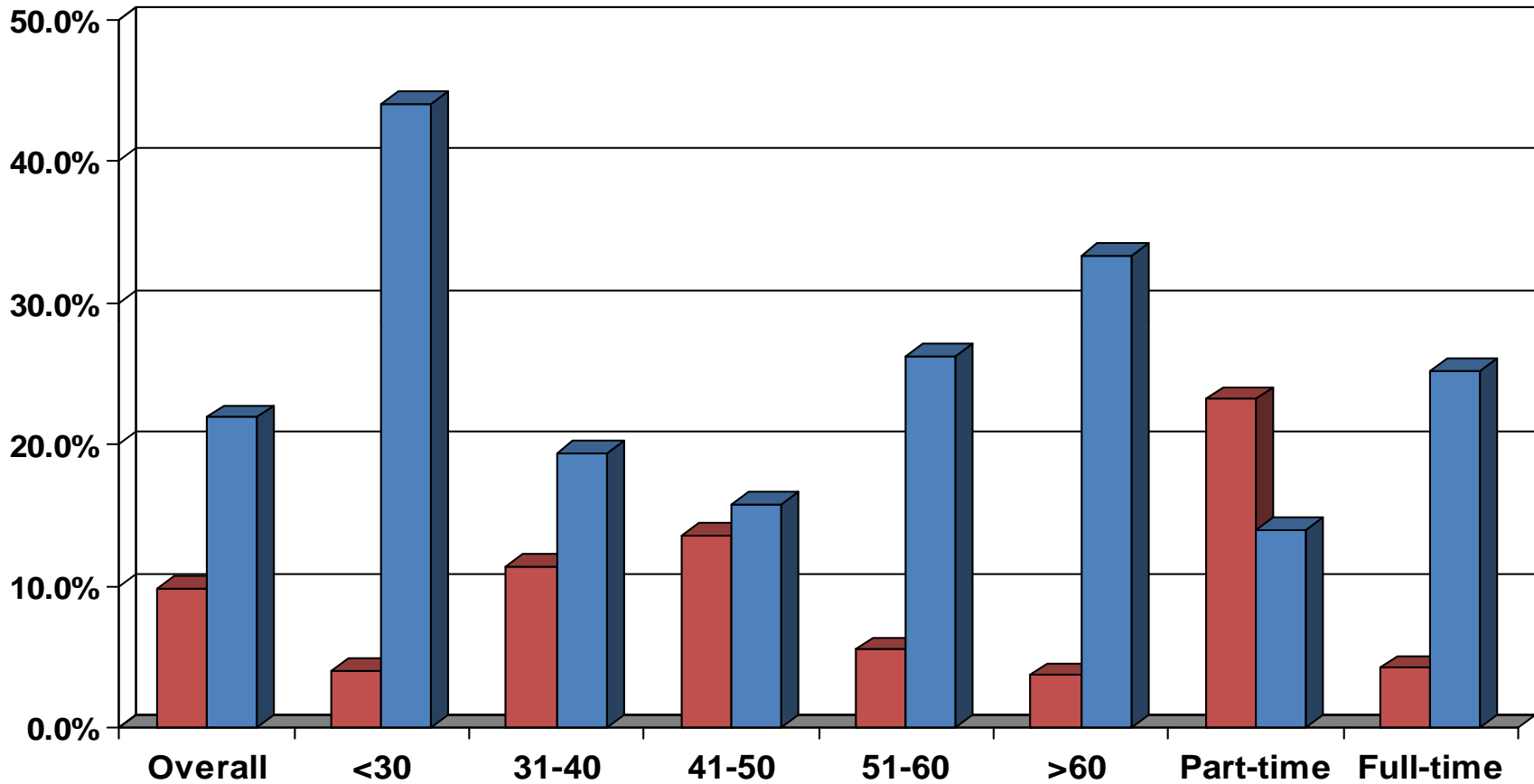
703-739-2330

FEDERAL ID# 54-1569970



PHARMACY
MANPOWER
PROJECT, INC.

Work Plans in Three Years for Female Active Pharmacists: 2009



Source: Mott et al., 2010. ■ Work More Hours ■ Work Fewer Hours

Source: The National Pharmacist
Workforce Study, March 2009

1727 KING STREET
ALEXANDRIA, VA 22314

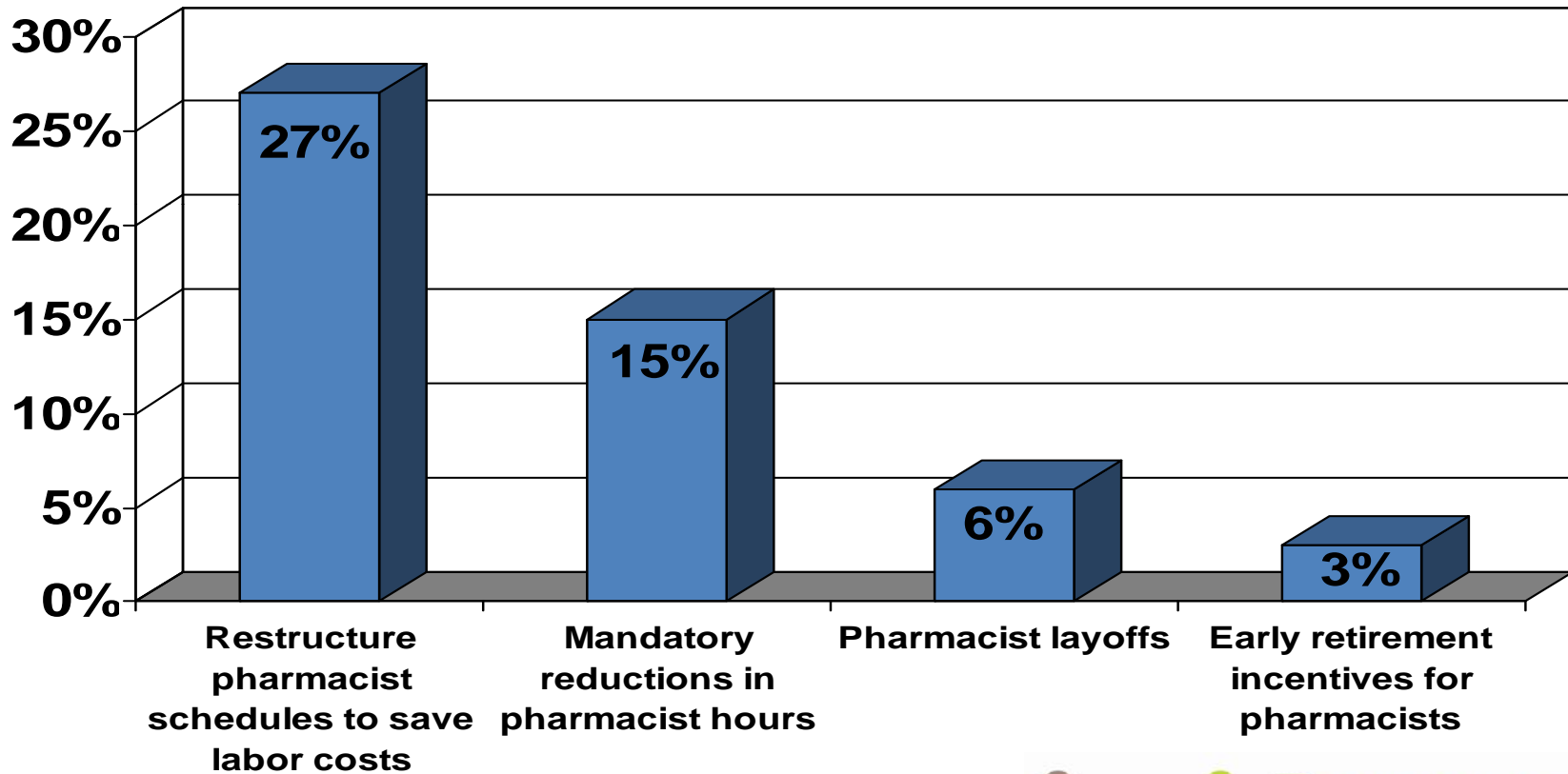
703-739-2330

FEDERAL ID# 54-1569970



PHARMACY
MANPOWER
PROJECT, INC.

Pharmacist Labor Cost Reduction



Source: The National Pharmacist Workforce Study, March 2009

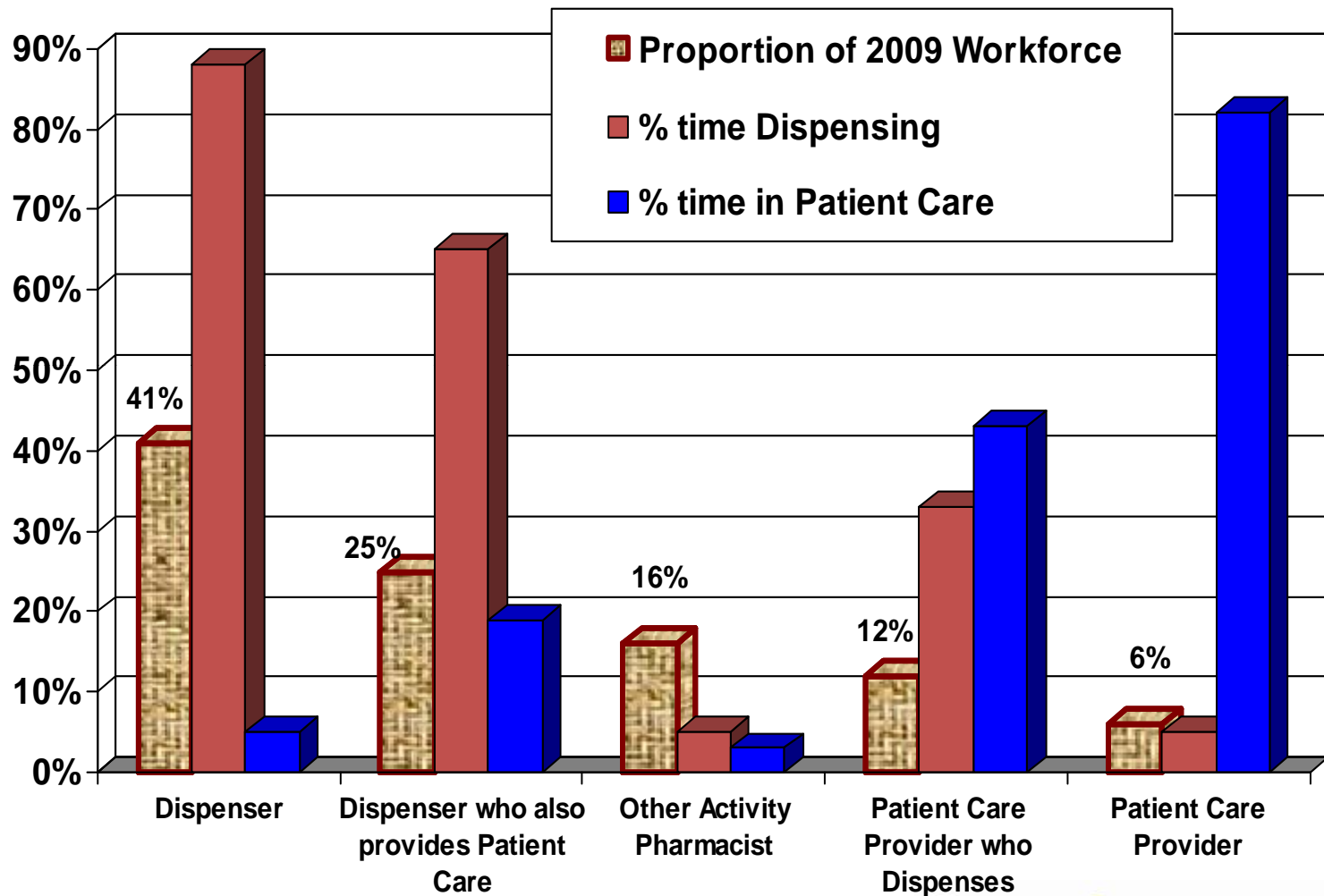
1727 KING STREET
ALEXANDRIA, VA 22314

703-739-2330

FEDERAL ID# 54-1569970



U.S. Pharmacist Segments in 2009



Source: The National Pharmacist Workforce Study, March 2009

1727 KING STREET
ALEXANDRIA, VA 22314

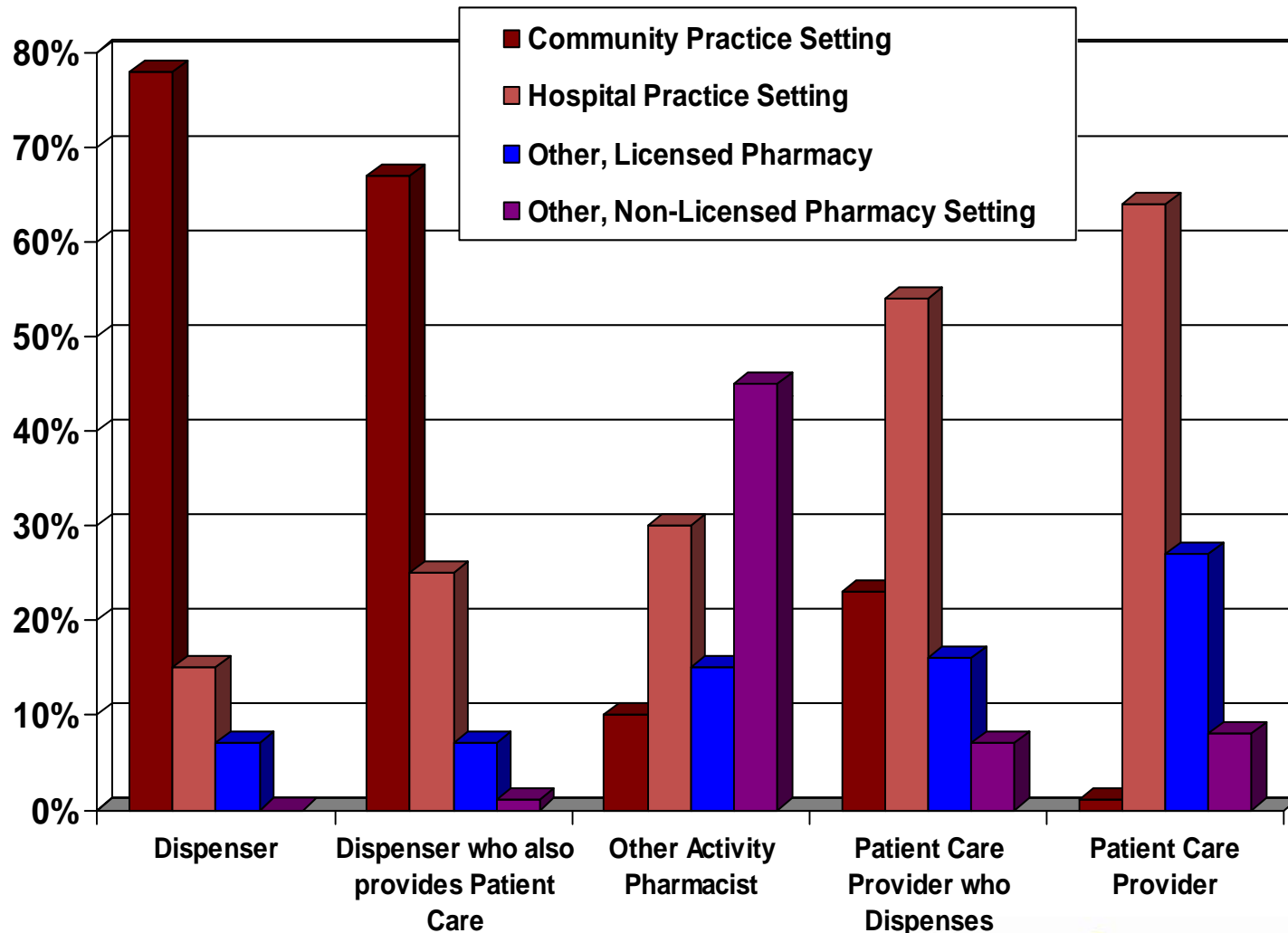
703-739-2330

FEDERAL ID# 54-1569970



PHARMACY
MANPOWER
PROJECT, INC.

U.S. Pharmacist Segments in 2009



Source: The National Pharmacist Workforce Study, March 2009

1727 KING STREET
ALEXANDRIA, VA 22314

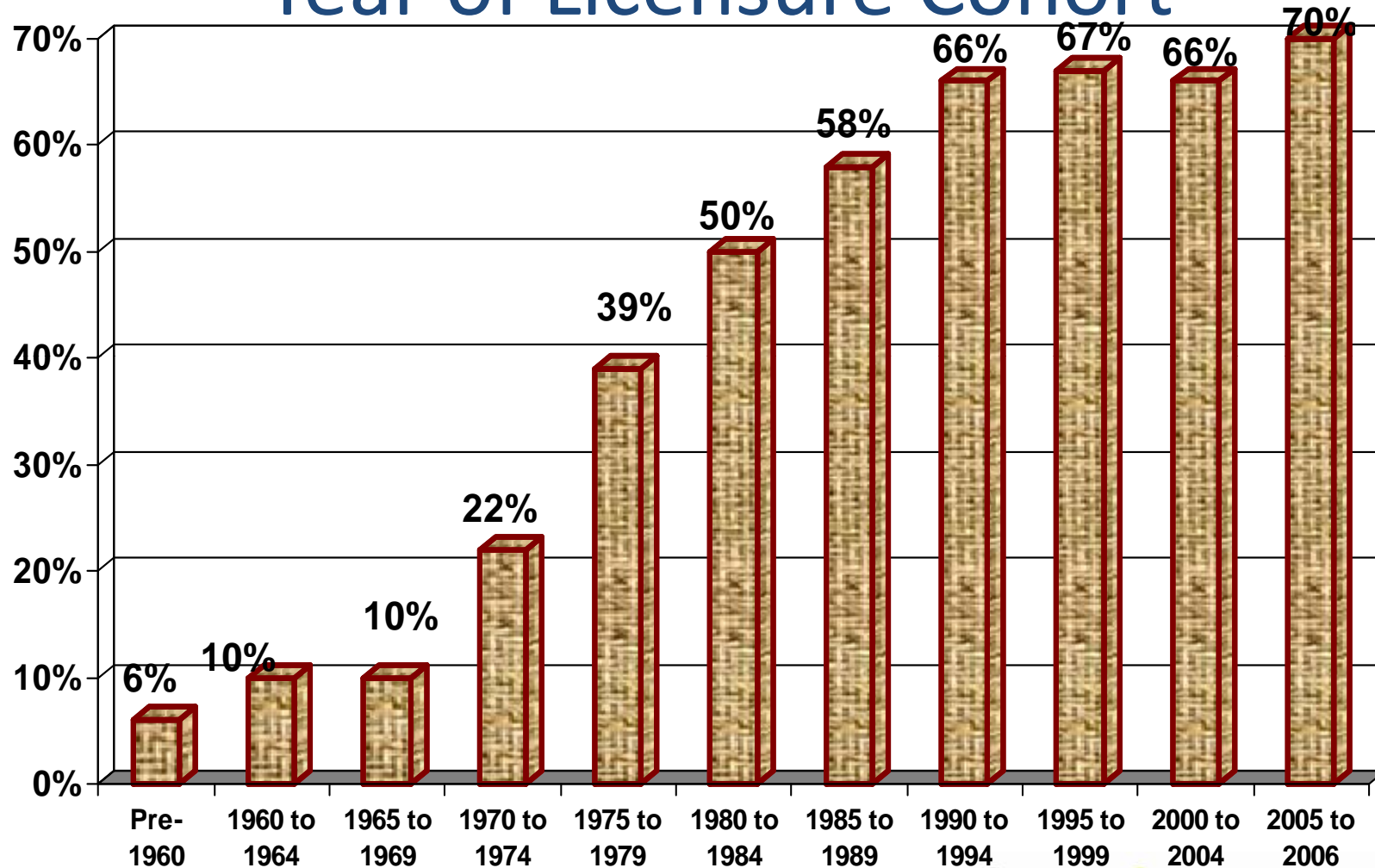
703-739-2330

FEDERAL ID# 54-1569970



PHARMACY
MANPOWER
PROJECT, INC.

Pharmacist Gender (% Female) by Year of Licensure Cohort

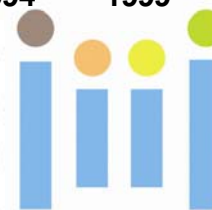


Source: The National Pharmacist Workforce Study, March 2009

1727 KING STREET
ALEXANDRIA, VA 22314

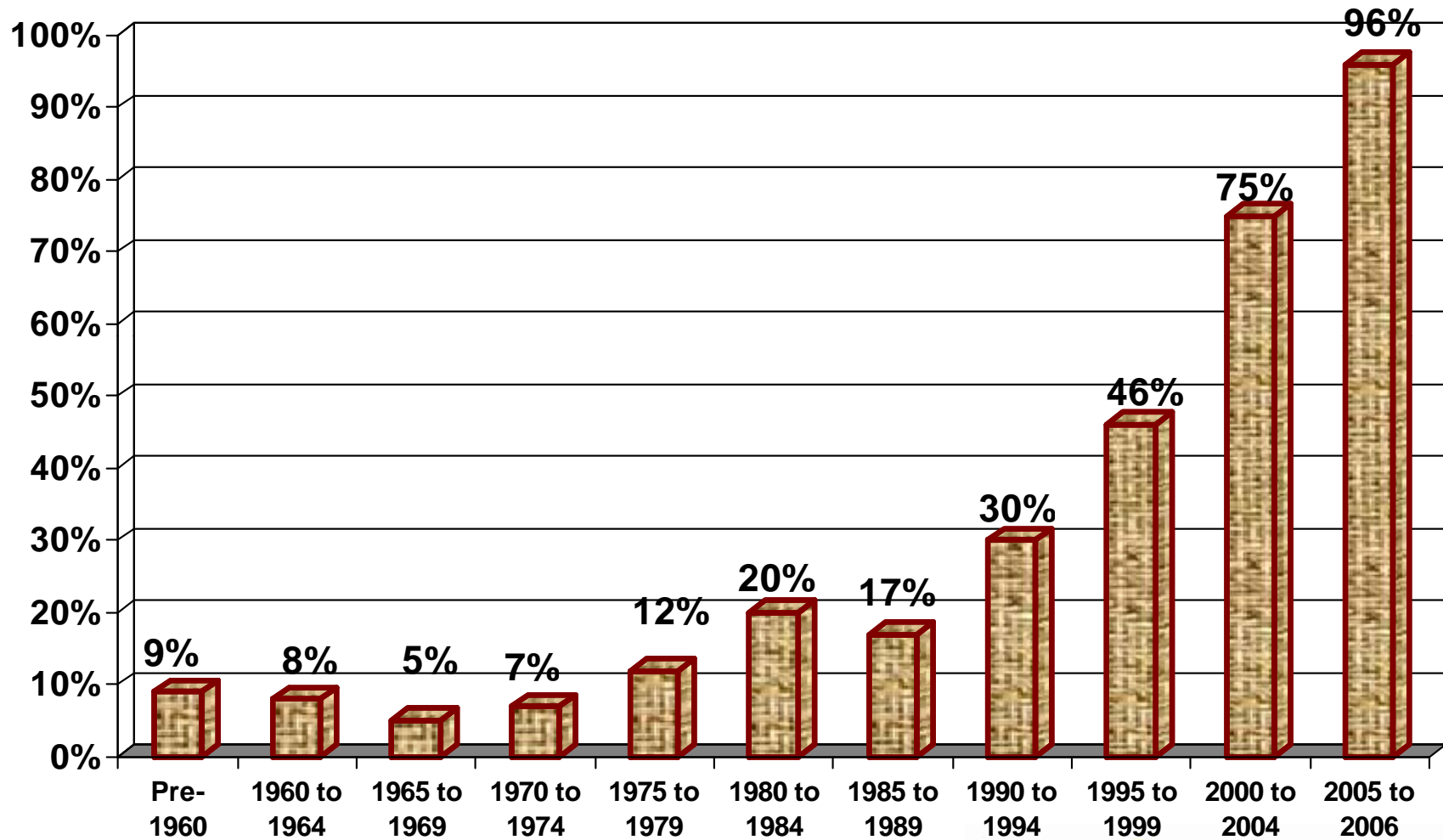
703-739-2330

FEDERAL ID# 54-1569970



PHARMACY
MANPOWER
PROJECT, INC.

% Pharm.D. by Year of Licensure Cohort



Source: The National Pharmacist
Workforce Study, March 2009

1727 KING STREET
ALEXANDRIA, VA 22314

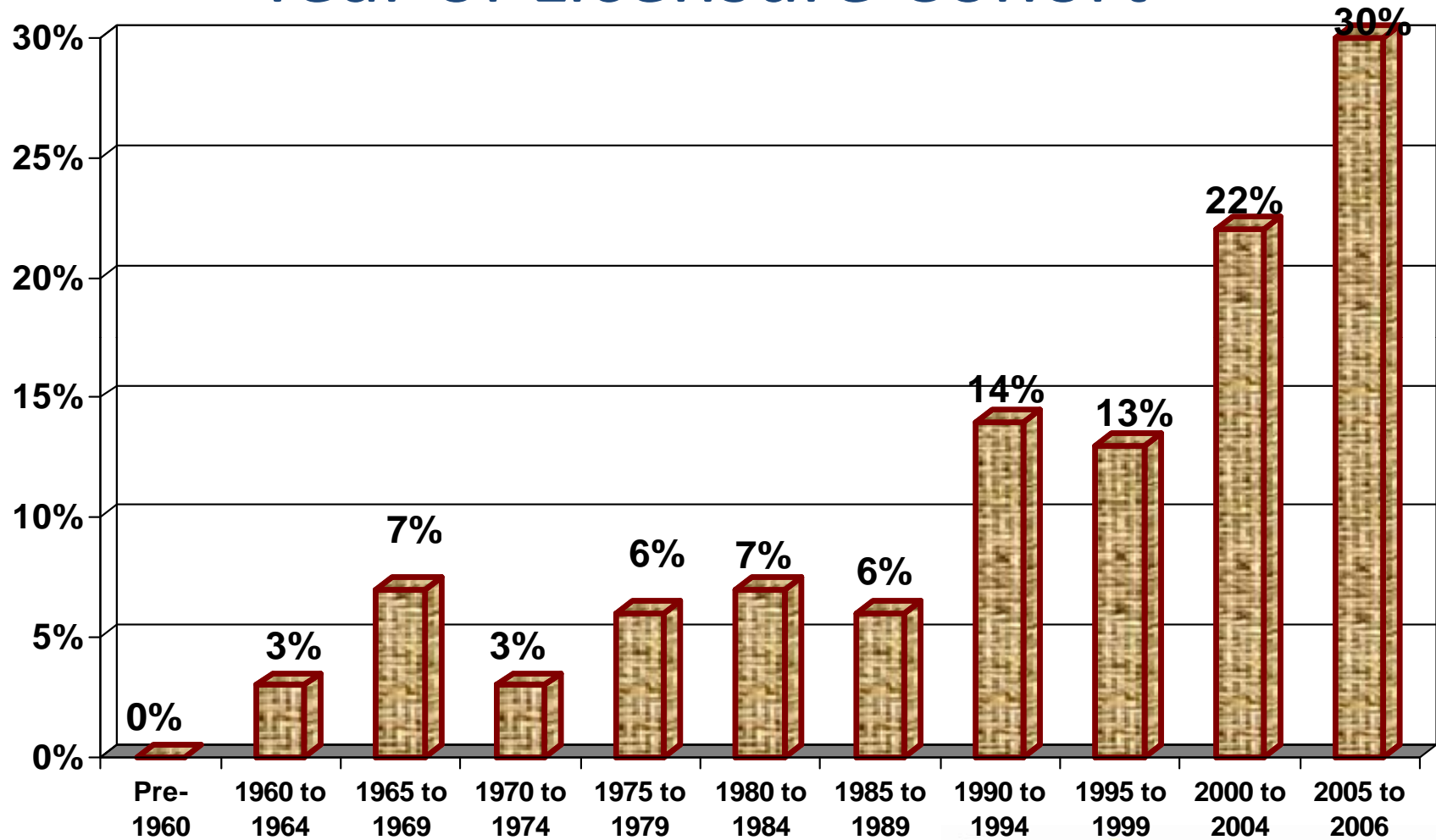
703-739-2330

FEDERAL ID# 54-1569970



PHARMACY
MANPOWER
PROJECT, INC.

% Residency by Year of Licensure Cohort



Source: The National Pharmacist Workforce Study, March 2009

1727 KING STREET
ALEXANDRIA, VA 22314

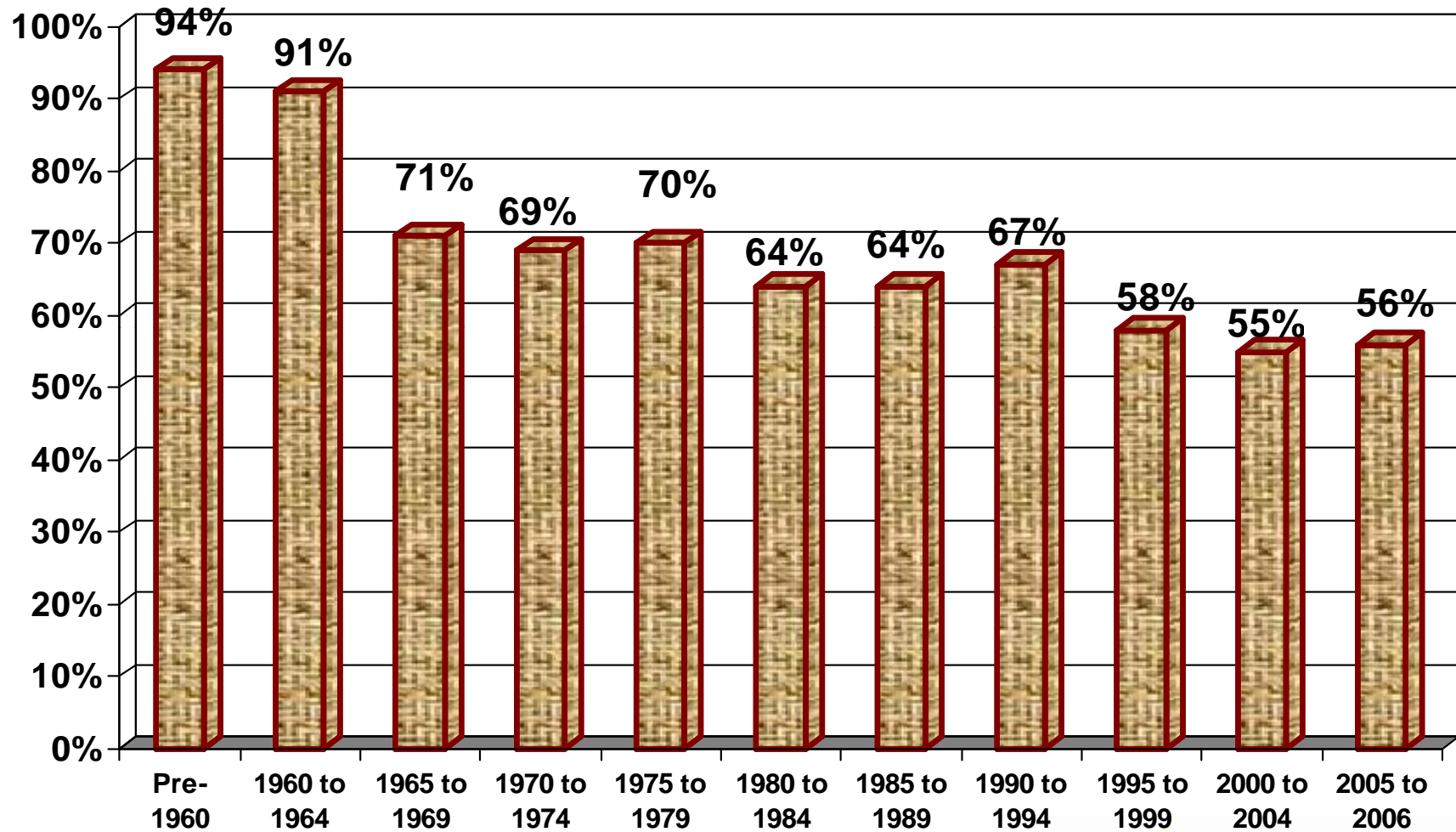
703-739-2330

FEDERAL ID# 54-1569970



PHARMACY
MANPOWER
PROJECT, INC.

% in Clusters 1&2 (Dispensers) by Year of Licensure Cohort



Source: The National Pharmacist Workforce Study, March 2009

1727 KING STREET
ALEXANDRIA, VA 22314

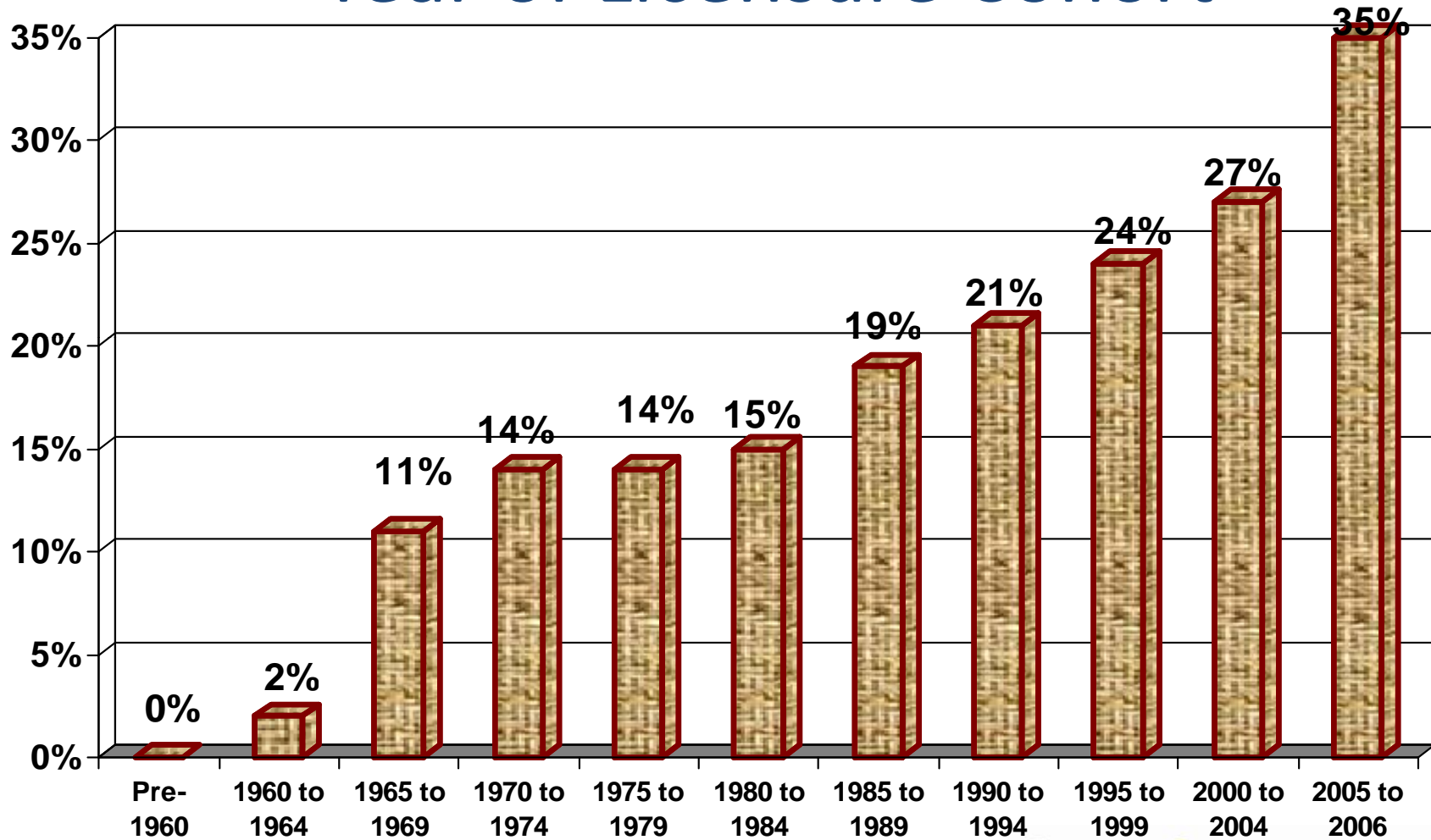
703-739-2330

FEDERAL ID# 54-1569970



PHARMACY
MANPOWER
PROJECT, INC.

% in Clusters 4 & 5 (Patient Care) by Year of Licensure Cohort



Source: The National Pharmacist Workforce Study, March 2009

1727 KING STREET
ALEXANDRIA, VA 22314

703-739-2330

FEDERAL ID# 54-1569970



PHARMACY
MANPOWER
PROJECT, INC.

2009 National Pharmacist Workforce Study

For more information, please
visit:

[http://www.aacp.org/resources/
research/pharmacymanpower/](http://www.aacp.org/resources/research/pharmacymanpower/)

Source: The National Pharmacist
Workforce Study, March 2009

1727 KING STREET
ALEXANDRIA, VA 22314

703-739-2330

FEDERAL ID# 54-1569970



PHARMACY
MANPOWER
PROJECT, INC.