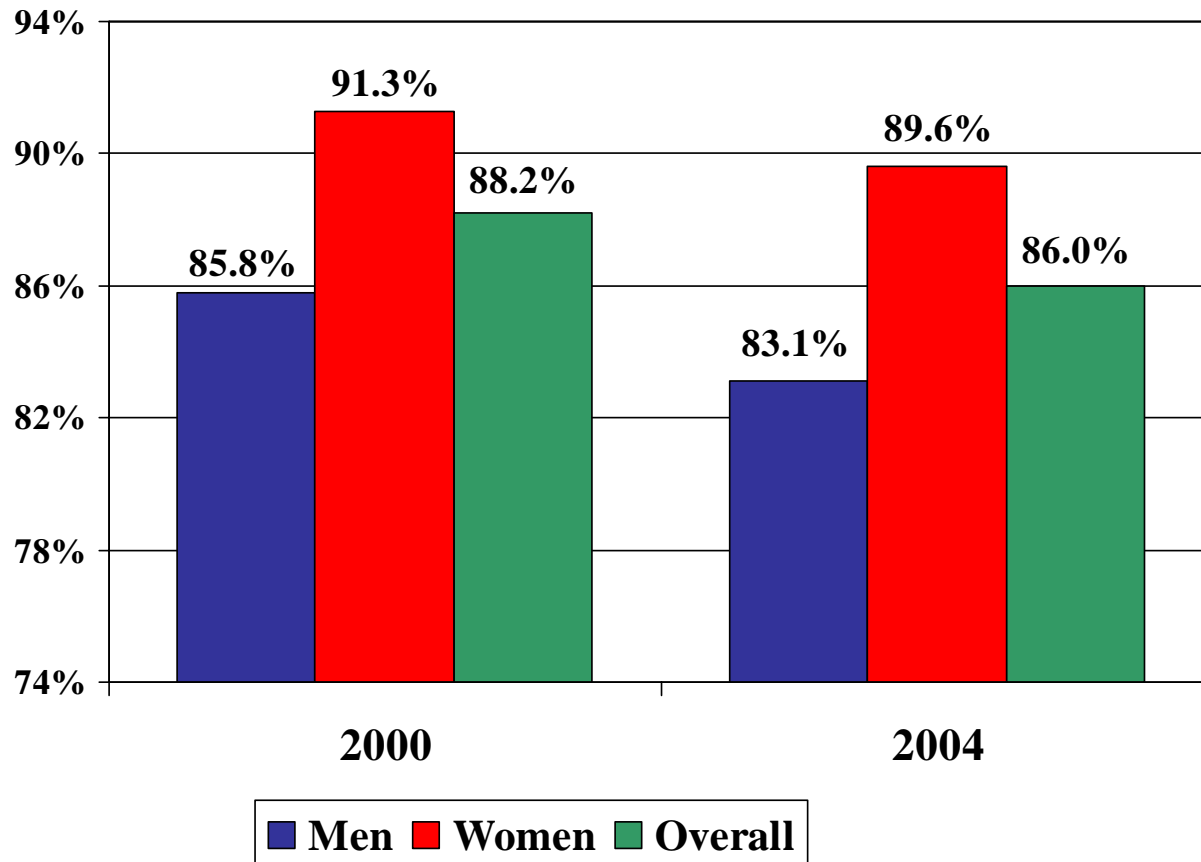
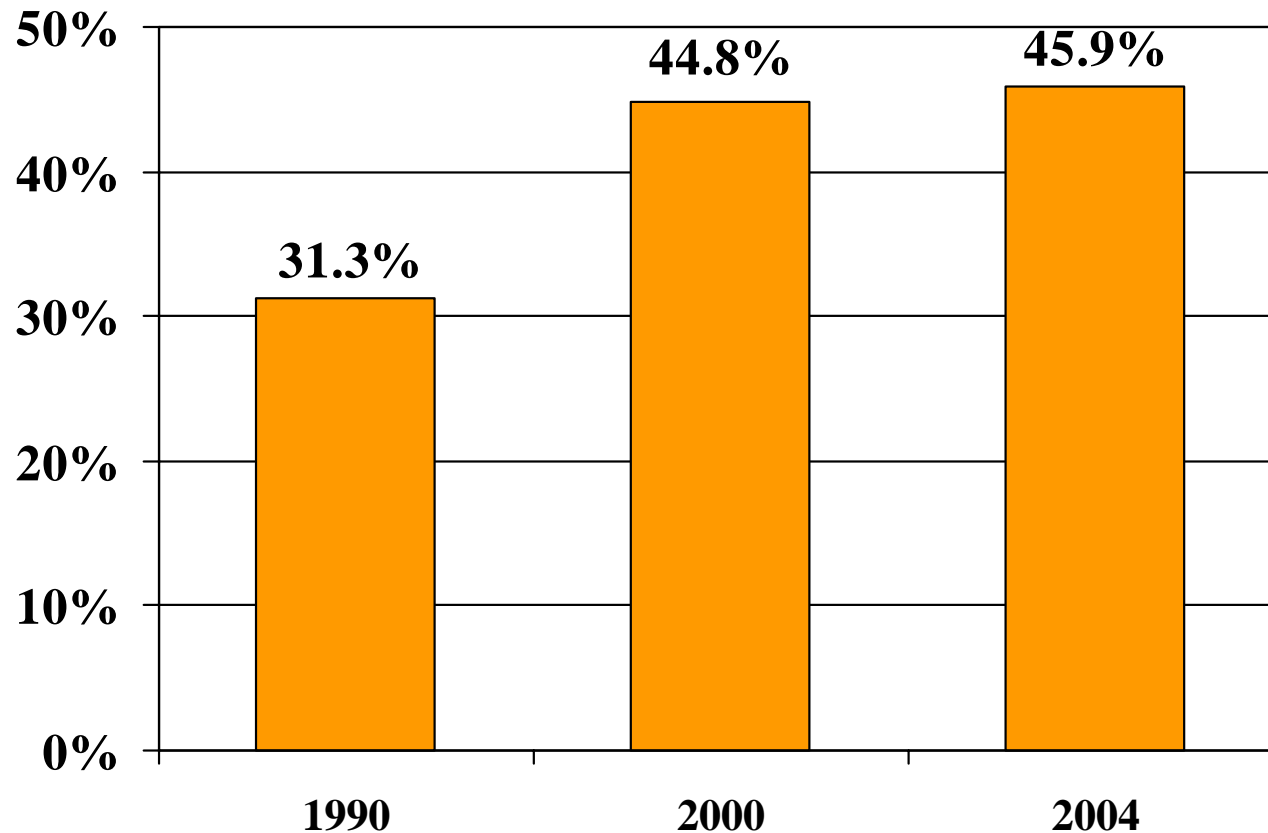


# Percentage of Licensed Pharmacists Actively Practicing Pharmacy: 2000, 2004



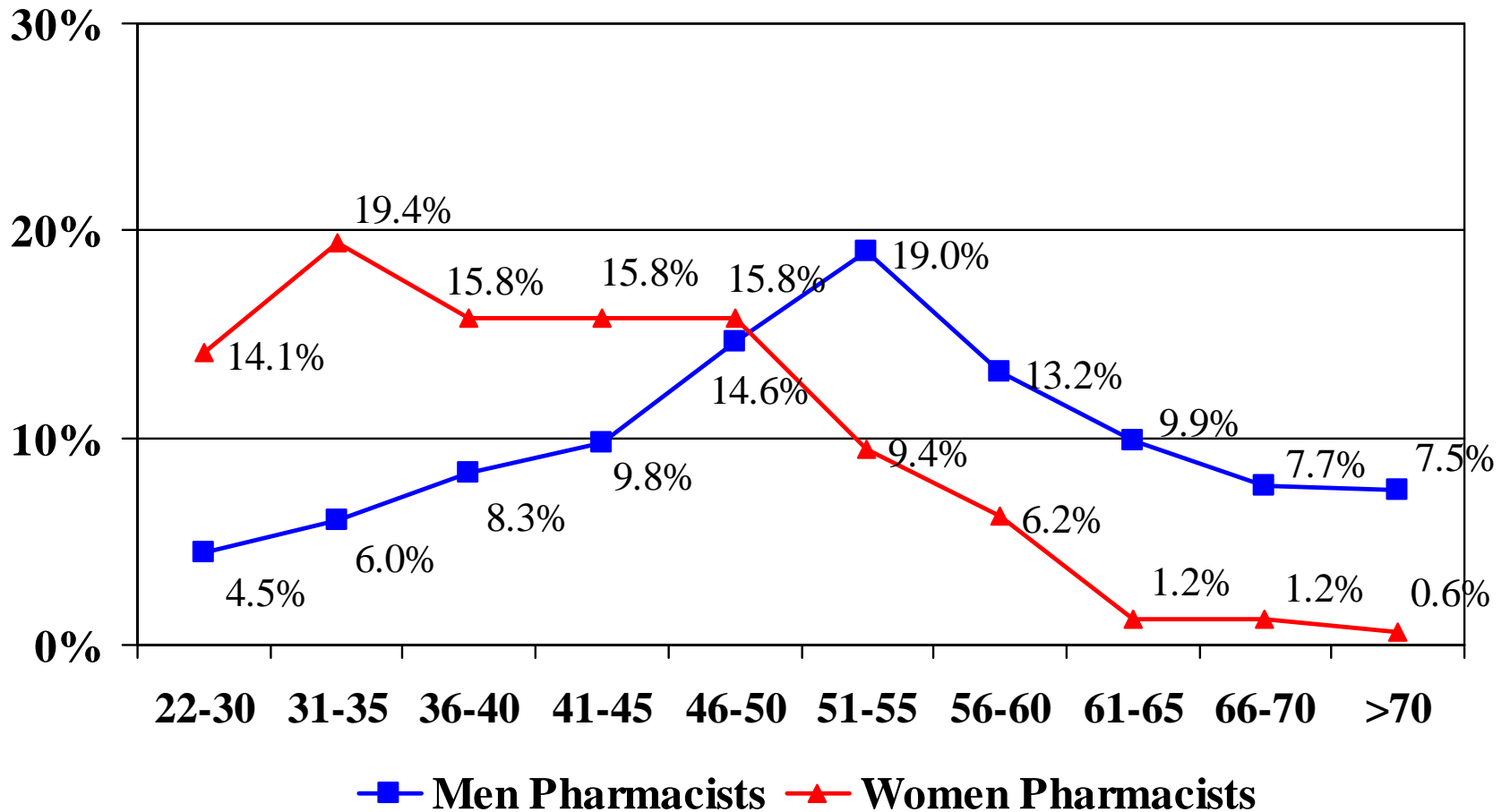
Source: The National Pharmacist Workforce Study, March 2006

# Percentage of Actively Practicing Pharmacists That Are Women: 1990, 2000, 2004



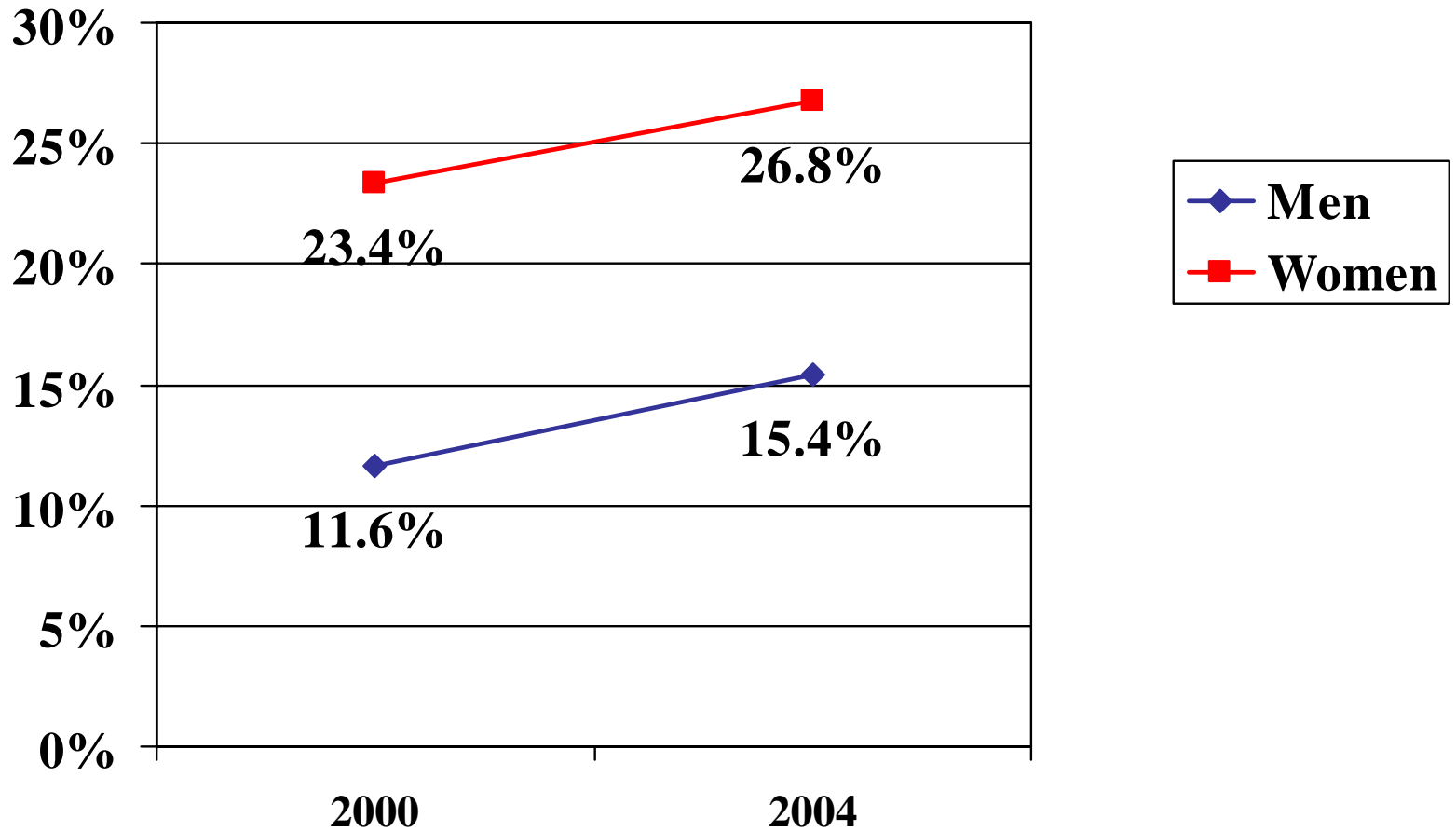
Source: The National Pharmacist Workforce Study, March 2006

# Age Distribution of Actively Practicing Pharmacists by Gender, 2004



Source: The National Pharmacist Workforce Study, March 2006

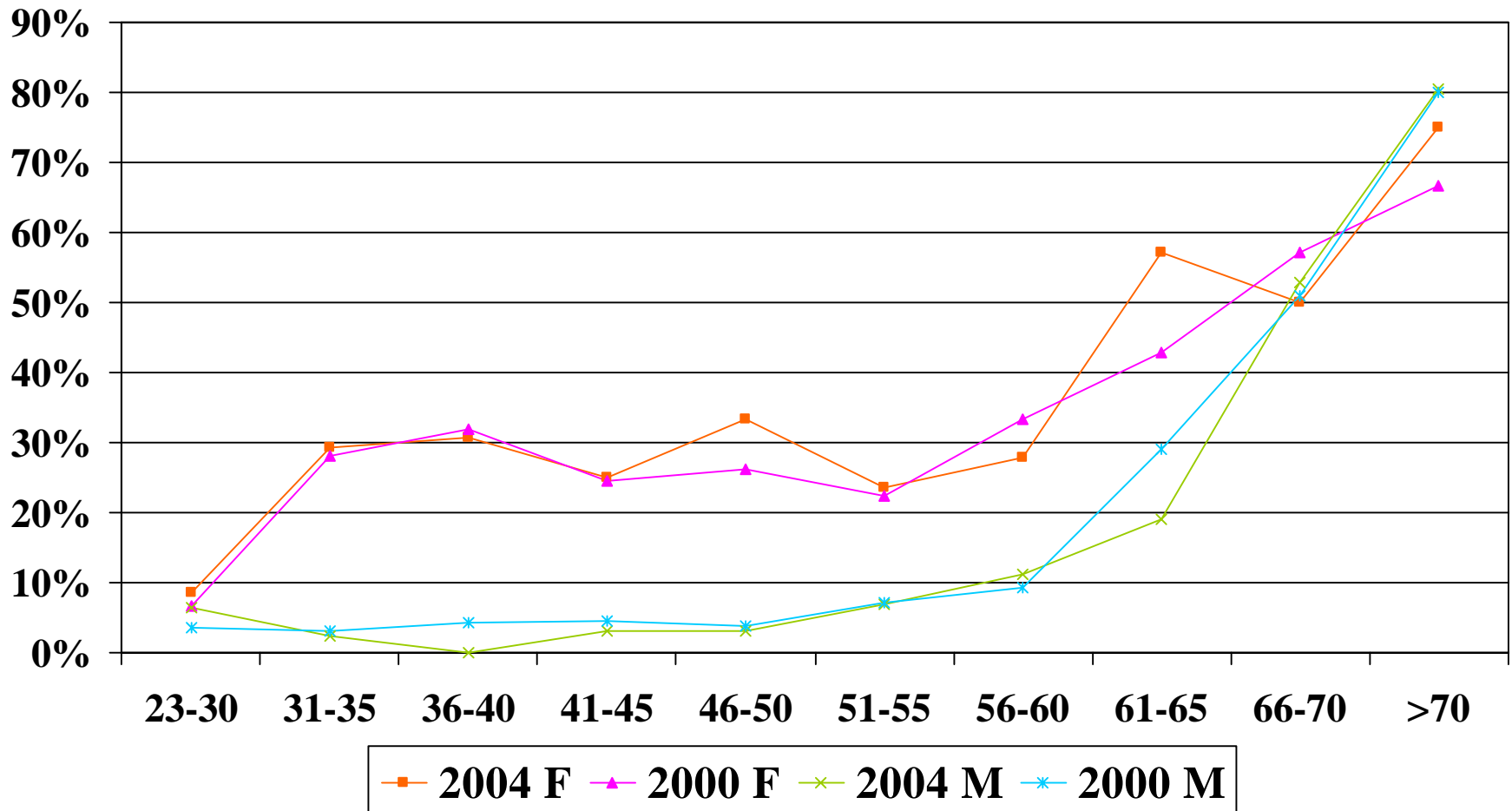
# Percentage of Actively Practicing Pharmacists Working Part-time: 2000, 2004



Source: The National Pharmacist Workforce Study, March 2006

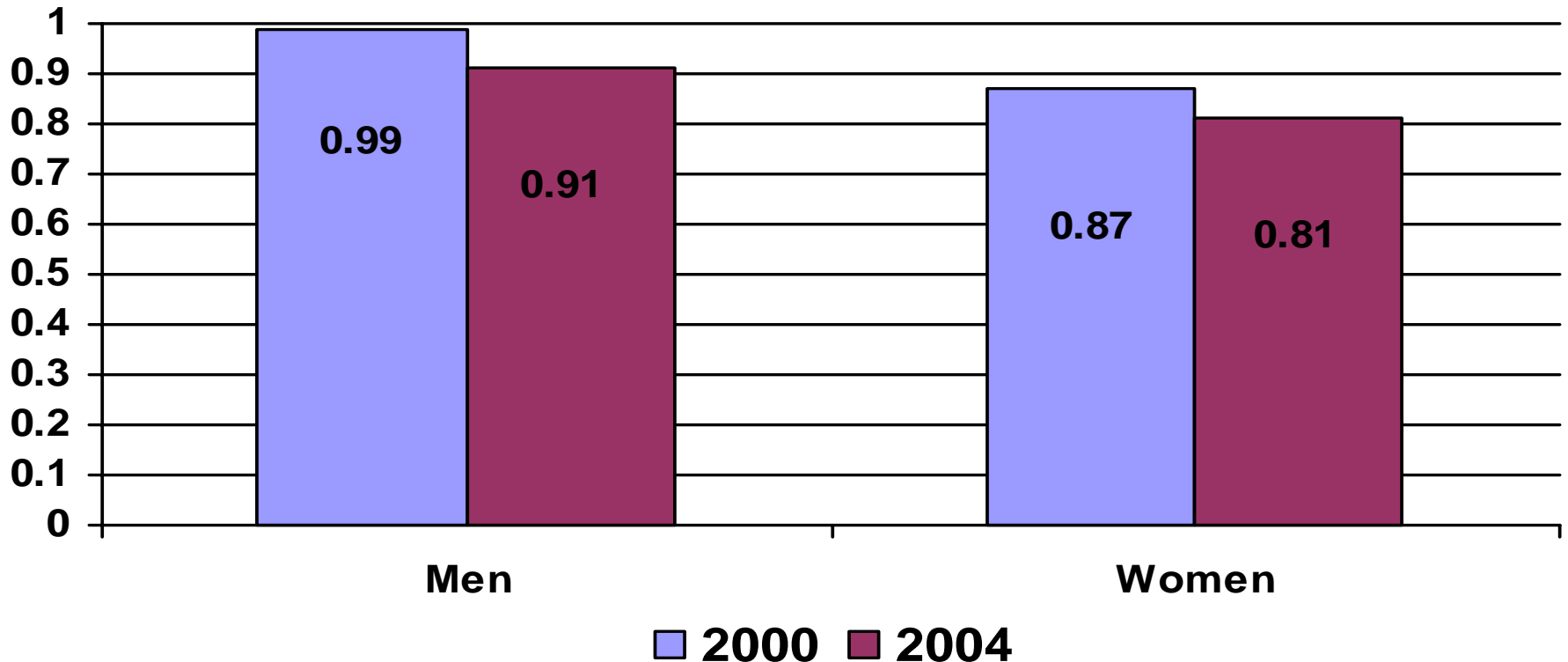
# Rate of Part-time Work by Gender and Age Category

## Category: 2000, 2004



Source: The National Pharmacist Workforce Study, March 2006

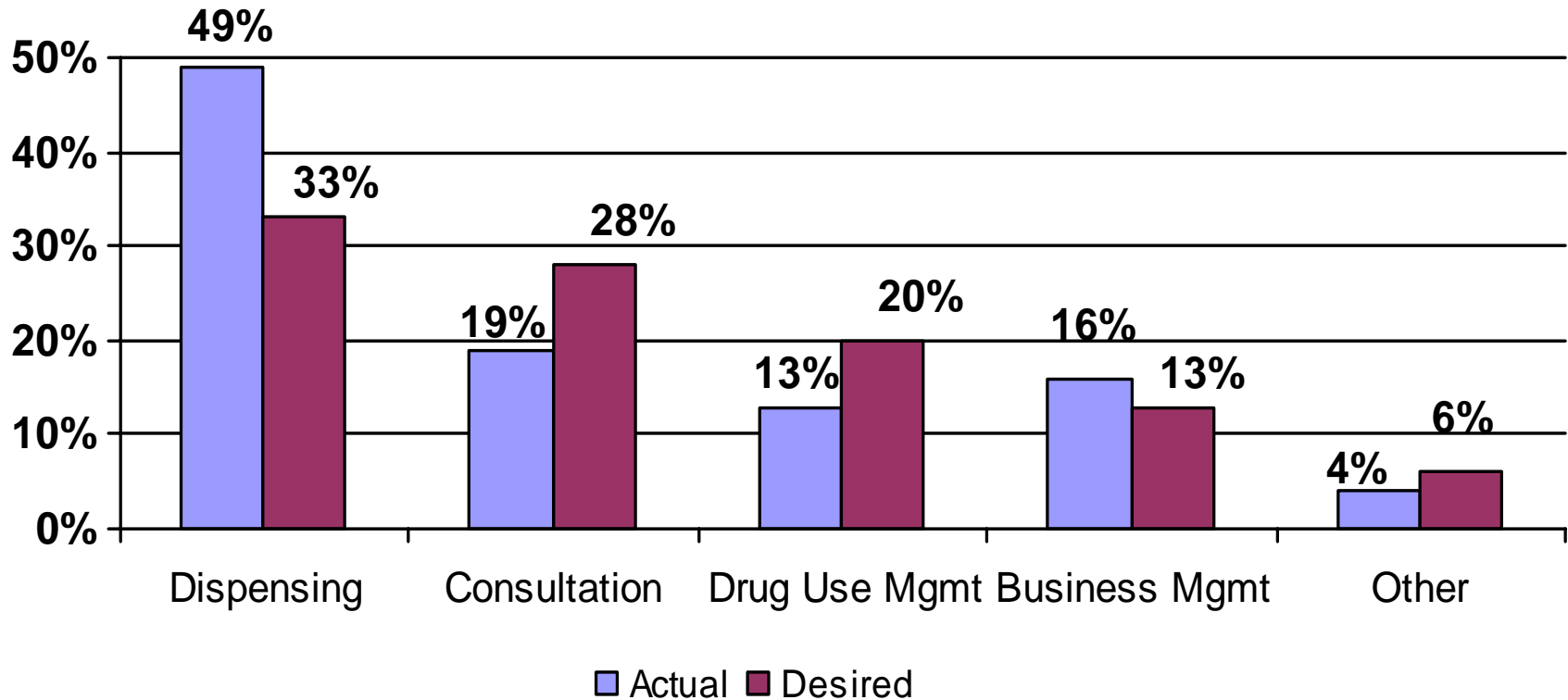
# Full-time Equivalent (FTE) for Men and Women Active Pharmacists: 2000 & 2004



Differences between 2000 & 2004 for both men and women are statistically significant,  $P < 0.05$ .

Source: The National Pharmacist  
Workforce Study, March 2006

# Actual and Desired Amount of Time Spent in Work Activities: 2004



Source: The National Pharmacist Workforce Study, March 2006